

VISION & MISSION

Provide leading fluid solutions and improve the quality of life for everyone.



SHIMGE[®]
..... for better life



NSGW-Type Standard End Suction Centrifugal Pump

Shimge Pump Industry (Zhejiang) Co., Ltd
Headquarter address: Dayangcheng Industrial Zone, Daxi Town, Wenling City, Zhejiang Province, 317525, China
Tel: +86- 576- 86331536 / 86335366 / 86333138
Fax: +86- 576- 86335467
Email: shichangbu@shimge.com
Webite: www.shimge.com

SHIMGE PUMP INDUSTRY (ZHEJIANG) CO., LTD.

Contents

01	Company Profile
03	Product Overview
05	Highlight Features
07	Type Chart
09	Standard Parameter Table
21	Outline and Installation Dimensions of Single Pump
23	Outline and Installation Dimensions of Pump with Motor





Company Profile

Established in 1984 and headquartered in Daxi Town, Wenling City, Zhejiang Province—a town with flourishing pump industry, Shimge Pump Industry (Zhejiang) Co., Ltd. is a limited liability company. For 30 years, Shimge has been focusing on technical research, manufacturing and market promotion of various pumps and control equipment. It is dedicated to leading the fluid industry, and creating quality life together.

Based on keen market insight, the company developed the “screw pump” in 1987, which filled the gap in the domestic market at that time. Due to its excellent quality, Shimge soon stood out in the industry, and started its journey as a legendary brand in China’s pump industry. The company was once successfully listed in the A-share market in Shenzhen Stock Exchange on December 31, 2010 (stock code: 002532. According to the development strategy of the company, it was delisted in the form of asset reorganization and completed privatization in July 2020). Currently, the company has 6 major brands, 12 product series with more than 2,000 specifications, and 8 holding subsidiaries, becoming a real leading brand in China’s pump industry.



Shimge's production base in HangZhou, Zhejiang Province



Shimge's casting parts production base in JiangSu Province

Shimge's casting production base in JiangXi Province

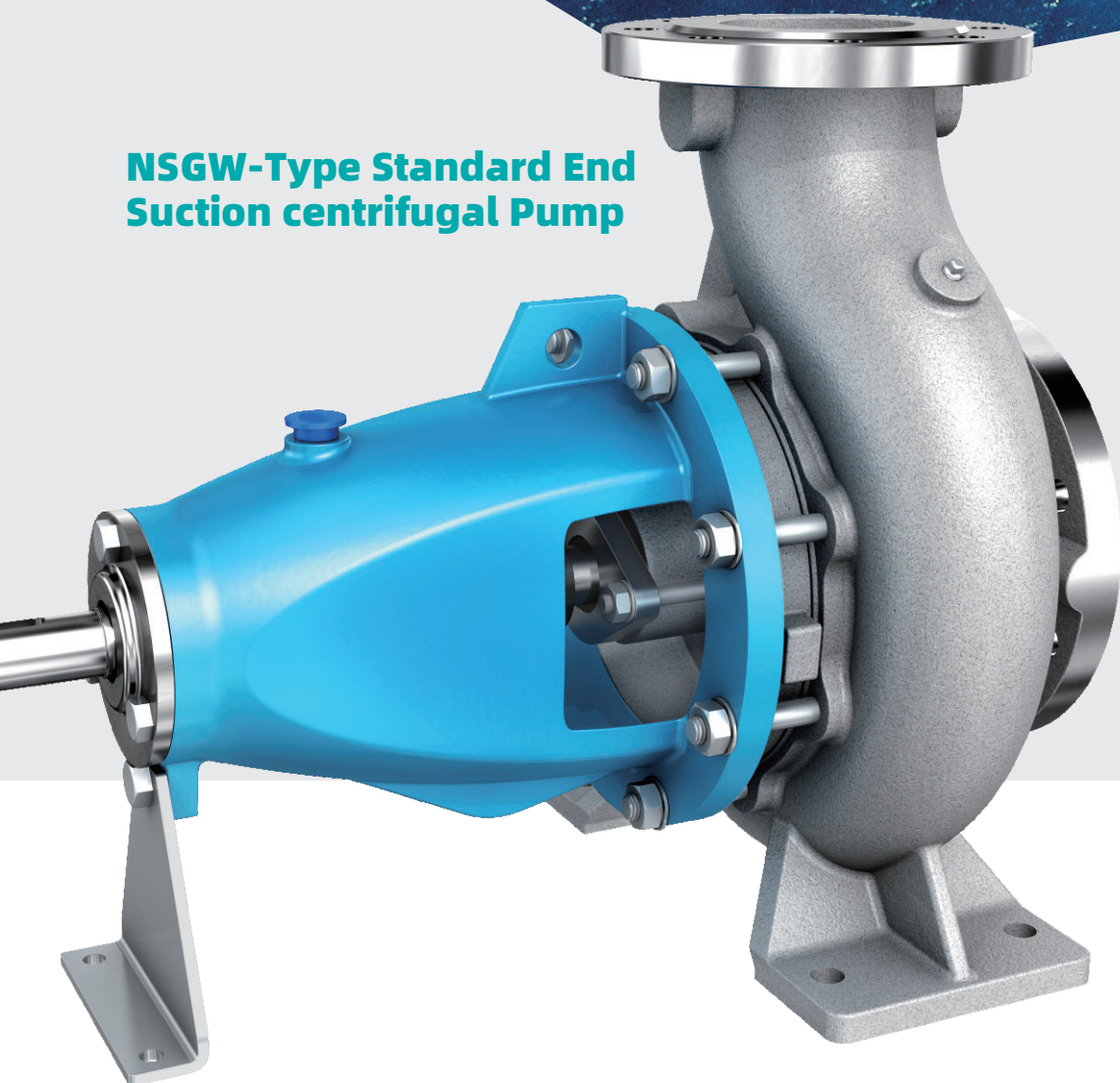
Shimge's casting production base in JiangSu Province



Shimge's production base in SanChiku, Wenling, Zhejiang Province



NSGW-Type Standard End Suction centrifugal Pump



Product Overview

NSGW pump is used for pumping clean water and liquid with physical and chemical properties similar to water, and is suitable for factories, mines, urban water supply and drainage, air conditioning, fire fighting, and agricultural irrigation. Pumps with the same specifications can have different performance due to the change of different impeller outer diameters (represented by adding A, B, C etc. after the pump model). The pump has simple structure, reliable performance, small size, light weight, good cavitation resistance, low power consumption and convenient use and maintenance. It has a wide range of versatility. The whole series have 60 specifications, but only four types of shafts are used. The shafts, bearings, shaft sleeves, shaft seals and impeller fasteners of the same specification can be interchanged. There are only five types of suspension for the whole series of pumps too.

Application Scope

Water treatment, textile industry, washing and cleaning, chemical industry, marine, paper making, power plant, etc., providing excellent solutions and reliable guarantee for relevant application fields, covering all ranges of flow volume.

Technical Application

Axial suction, radial outlet, and horizontal shaft structure. It is not necessary to disassemble the suction and discharge pipes when removing the pump cover and impeller. It adopts the modular design concept and is precisely manufactured by the machining center. All stainless steel pumps are precision cast, pickled and passivated, with exquisite and beautiful appearance.

Material Configuration

Pump casing	Grey cast iron, nodular cast iron, cast steel, nickel cast iron, bronze, stainless steel, duplex stainless steel, etc
Impeller and seal ring	Grey cast iron, nodular cast iron, cast steel, stainless steel, bronze, duplex stainless steel, etc
Pump shaft	Carbon steel, stainless steel, duplex stainless steel, etc
Seal shaft sleeve	Stainless steel, duplex stainless steel, etc

*A variety of different material combinations can meet the requirements of various working conditions
*Special materials can be customized according to requirements

Technical Parameters

Maximum flow Q	1080 m ³ /h
Maximum head H	105 m
Maximum working pressure:	1.6 MPa
Maximum working temperature:	130 °C
Flange pressure rating:	PN1.6MPa
Shaft seal structure	Mechanical seal, packing seal
Rotation direction	From the view of motor, the pump rotates clockwise

*Applicable to power supply condition with frequency of 60HZ

Model Description

NSGW	Type Standard End Suction Centrifugal Pump
200	Discharge outlet diameter of the pump, mm
40	Nominal diameter of the impeller, cm
A (B)	Impeller diameter code

NSGW Pumps

Highlighted Features of NSGW Type Standard End Suction Centrifugal Pump

NSGW Pumps

① Pressure check hole is provided at the inlet and outlet to facilitate the monitoring of inlet and outlet pressure

② The internal flushing design of the mechanical seal improves the working conditions of the seal and increases the service life

③ CFD fluid simulation and analysis technology, optimizing hydraulic design and ensuring high efficiency and energy-saving

④ Excellent sealing solutions, such as single-end structure, double-end structure, container-type structure, etc

⑤ The impeller seal ring effectively protects the impeller and pump body

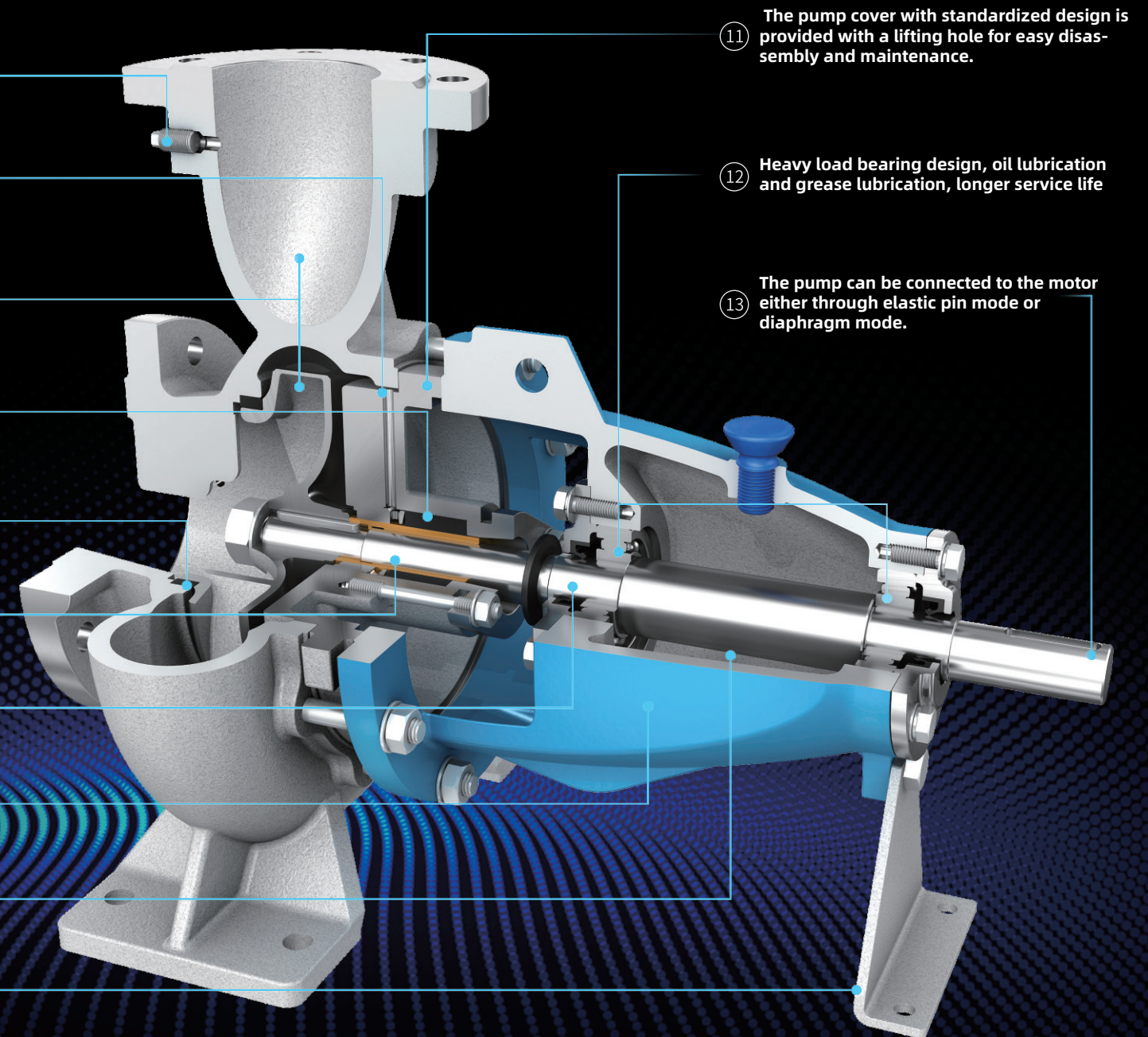
⑥ The stainless steel shaft sleeve protects the pump shaft from wear.

⑦ The pump shaft with enlarged size design ensures more stable and reliable operation of the pump.

⑧ Modular design, strong versatility of parts in the series, effectively reducing the maintenance cost in the future

⑨ Both oil lubrication and grease lubrication are available for bearing lubrication, which is convenient for different use conditions

⑩ The auxiliary support frame ensures operation stability.

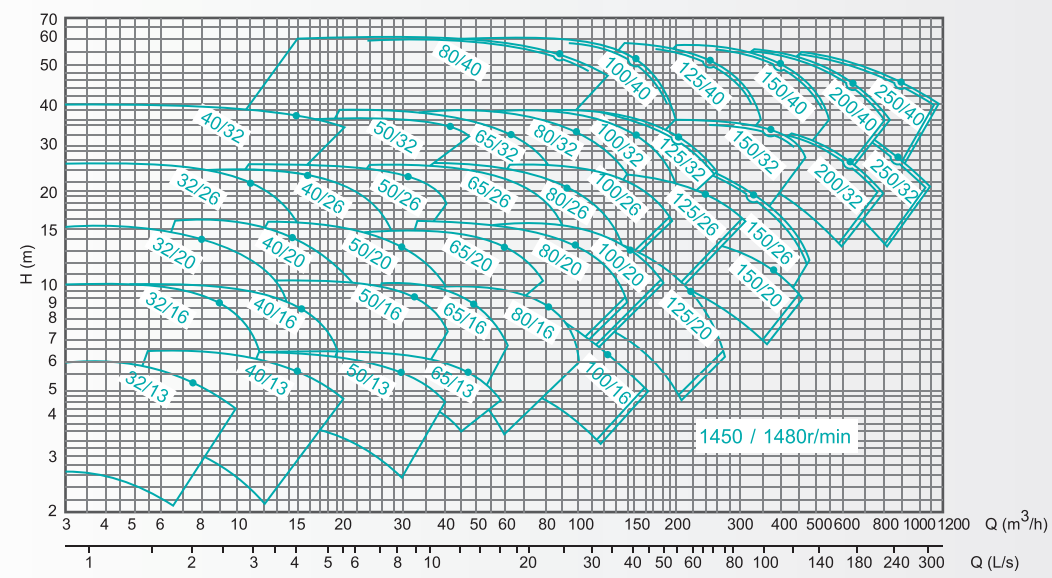
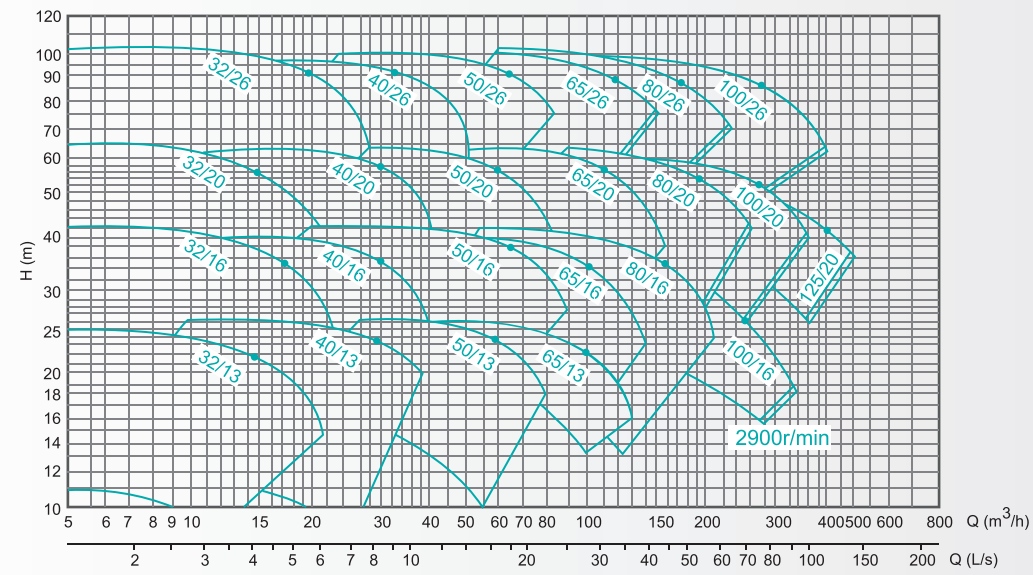


⑪ The pump cover with standardized design is provided with a lifting hole for easy disassembly and maintenance.

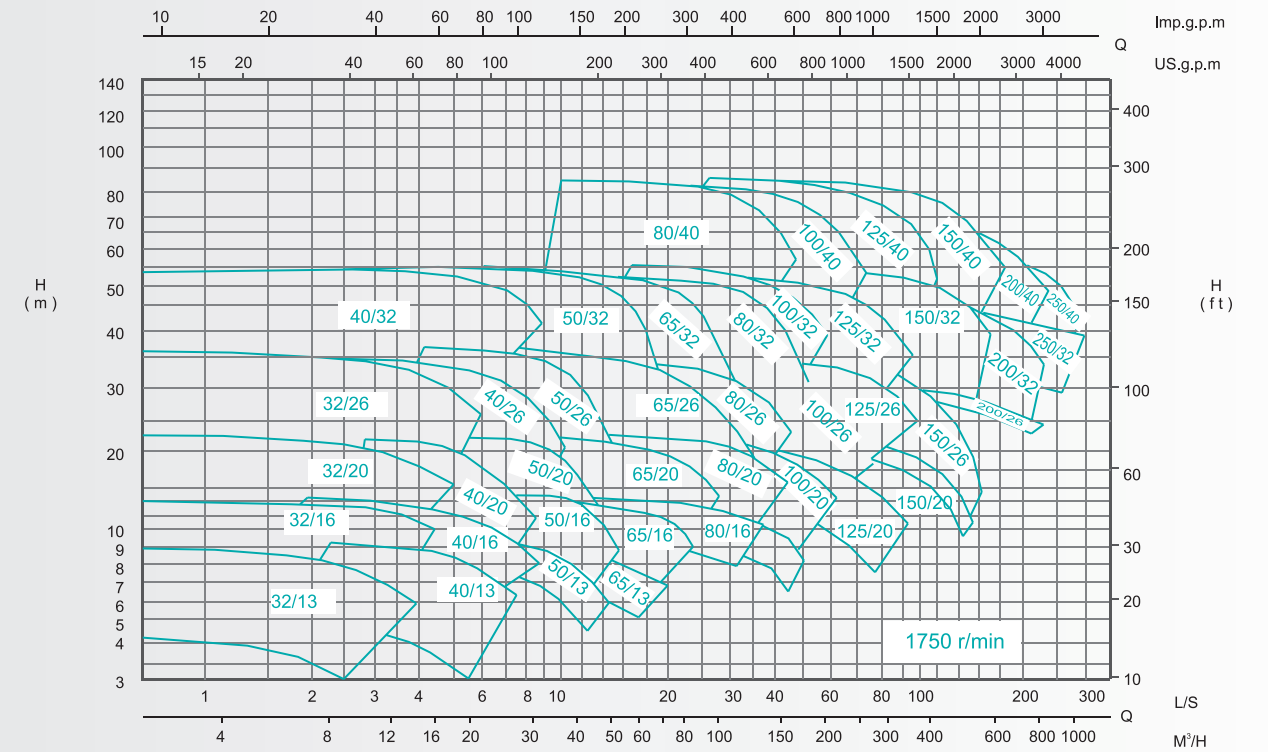
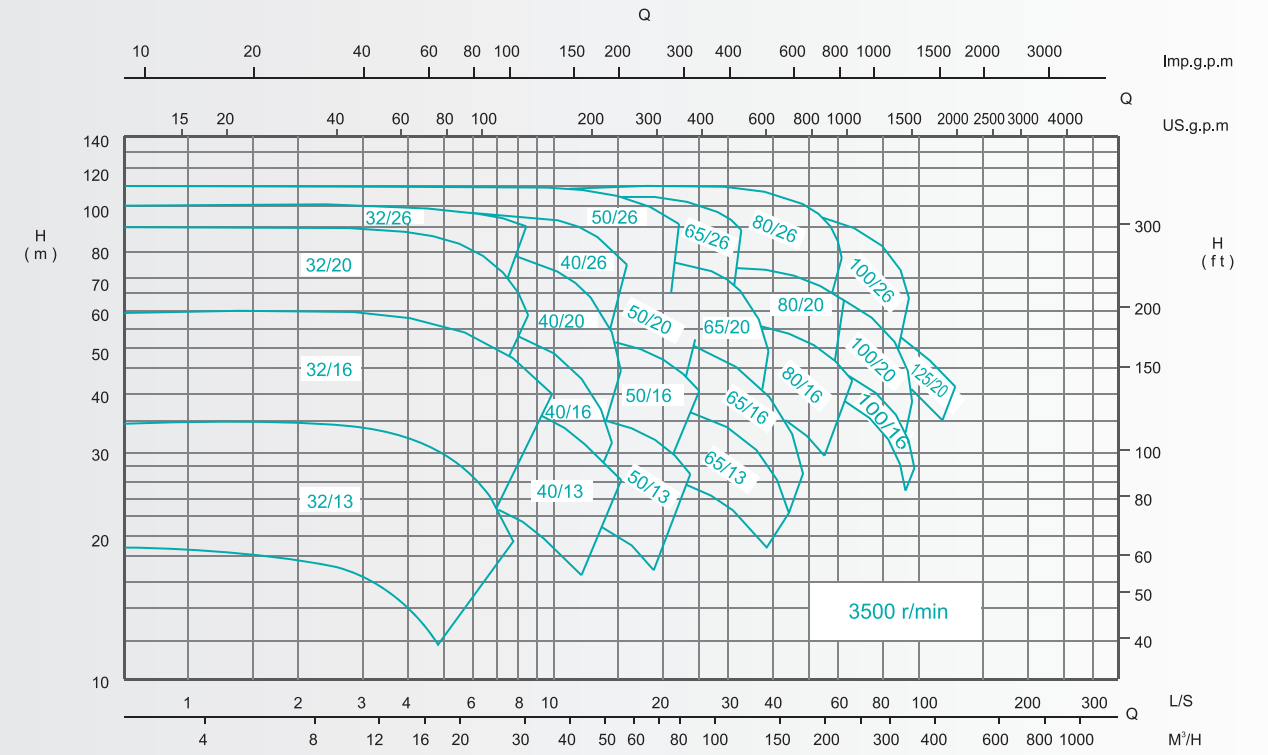
⑫ Heavy load bearing design, oil lubrication and grease lubrication, longer service life

⑬ The pump can be connected to the motor either through elastic pin mode or diaphragm mode.

NSGW Type Selection Chart



Please declare if the pressure > 16 bar



Standard Parameter Table of
NSGW Standard End Suction Centrifugal Pump

Pump mode	Capacity		Head m	Speed r/min	Power(kW)		Eff. %	(NPSH)r m	Pump weight kg
	m³/h	L/S			Shaft kW	Motor kW			
NSGW32/13	9.0	2.50	26.0	2900	1.23	1.5	52	1.4	29
	15.0	4.17	24.0		1.61	2.2	61	1.7	
	18.0	5.00	22.5		1.78	2.2	62	2.5	
NSGW32/13A	8.4	2.34	22.0	2900	0.98	1.5	51.5	1.4	29
	14.0	3.90	19.7		1.25	1.5	60	1.7	
	16.8	4.68	18.0		1.36	2.2	60.5	2.5	
NSGW32/13B	7.8	2.16	18.0	2900	0.75	1.1	51	1.4	29
	13.0	3.60	16.2		0.98	1.1	58.5	1.7	
	15.6	4.32	14.5		1.06	1.5	58	2.5	
NSGW32/13C	7.1	1.98	14.8	2900	0.57	1.1	50	1.4	29
	11.9	3.30	13.0		0.74	1.1	57	1.7	
	14.3	3.96	11.4		0.80	1.1	55.5	2.5	
NSGW32/13D	6.5	1.80	11.7	2900	0.43	0.75	48	1.4	29
	10.8	3.00	10.1		0.57	0.75	52	1.7	
	13.0	3.60	8.7		0.59	1.1	52	2.5	
NSGW32/16	10.8	3.00	42.0	2900	2.66	3	46.5	1.9	35
	18.0	5.00	39.0		3.41	4	56	2.2	
	21.6	6.00	36.5		3.79	5.5	56.7	3.7	
NSGW32/16A	10.2	2.84	37.0	2900	2.27	3	45.5	1.9	35
	17.1	4.74	34.6		2.90	3	55.5	2.2	
	20.5	5.69	32.1		3.18	4	56.3	3.7	
NSGW32/16B	9.6	2.67	32.3	2900	1.92	3	44	1.9	35
	16.0	4.45	30.5		2.44	3	54.5	2.2	
	19.2	5.34	28.7		2.68	4	56	3.7	
NSGW32/16C	9.0	2.50	28.3	2900	1.61	2.2	43	1.9	35
	15.0	4.17	26.5		2.04	3	53	2.2	
	18.0	5.00	25.0		2.25	3	54.5	3.7	
NSGW32/16D	8.4	2.33	24.6	2900	1.40	2.2	40	1.9	35
	14.0	3.88	22.7		1.69	2.2	51	2.2	
	16.8	4.66	21.4		1.86	2.2	52.5	3.7	
NSGW32/16E	7.8	2.16	20.5	2900	1.11	1.1	39	1.9	35
	12.9	3.59	19.2		1.39	2.2	48.5	2.2	
	15.5	4.31	18.0		1.49	2.2	51	3.7	
NSGW32/20	10.8	3.00	64.2	2900	4.84	5.5	39	1.7	47
	18.0	5.00	58.5		5.92	7.5	48.4	2	
	21.6	6.00	54.1		6.59	11	48.3	2.3	
NSGW32/20A	10.3	2.87	58.3	2900	4.25	5.5	38.6	1.6	47
	17.2	4.79	53.0		5.16	7.5	48.2	1.95	
	20.7	5.75	48.3		5.66	7.5	48.1	2.2	
NSGW32/20B	9.8	2.73	52.2	2900	3.62	5.5	38.6	1.6	47
	16.4	4.56	47.7		4.48	7.5	47.5	1.95	
	19.7	5.47	43.2		4.92	7.5	47	2.2	
NSGW32/20C	9.3	2.59	47.2	2900	3.24	4	37	1.6	47
	15.6	4.32	42.5		3.87	5.5	46.5	1.95	
	18.7	5.19	38.2		4.22	5.5	46	2.2	
NSGW32/20D	8.8	2.45	42.2	2900	2.82	4	36	1.6	47
	14.7	4.09	38.0		3.39	5.5	45	1.95	
	17.7	4.91	34.2		3.72	5.5	44.2	2.2	
NSGW32/20E	8.3	2.31	37.5	2900	2.40	2.2	35.5	1.6	47
	13.9	3.86	33.8		2.97	4	43	1.95	
	16.7	4.63	30.4		3.17	4	43.4	2.2	
NSGW32/26	16.2	4.50	89.3	2900	11.76	15	33.5	2.1	58
	27.0	7.50	82.0		14.52	18.5	41.5	2.6	
	32.4	9.00	75.3		16.28	18.5	40.8	3.1	
NSGW32/26A	15.6	4.35	83.6	2900	10.79	15	33	2.1	58
	26.1	7.24	76.0		13.39	15	40.3	2.6	
	31.3	8.69	70.5		14.83	18.5	40.5	3.1	
NSGW32/26B	15.0	4.18	77.5	2900	10.23	15	31	2.1	58
	25.1	6.96	70.2		12.12	15	39.5	2.6	
	30.1	8.35	65.0		13.23	15	40.2	3.1	
NSGW32/26C	14.4	4.01	72.0	2900	9.12	15	31	2.1	58
	24.0	6.68	65.0		10.90	15	39	2.6	
	28.8	8.01	59.8		11.74	15	40	3.1	
NSGW32/26D	13.8	3.84	66.0	2900	8.13	11	30.5	2.1	58
	23.0	6.39	59.6		9.95	15	37.5	2.6	
	27.6	7.67	54.8		10.84	15	38	3.1	
NSGW32/26E	13.2	3.66	60.8	2900	7.28	11	30	2.1	58
	22.0	6.11	55.0		9.09	11	36.2	2.6	
	26.4	7.33	51.0		9.90	11	37	3.1	
NSGW40/13	18.0	5.00	25.3	2900	2.03	2.2	61	1.8	31
	30.0	8.33	23.5		2.63	3	73	2	
	36.0	10.00	21.8		2.91	4	73.5	3	
NSGW40/13A	16.8	4.67	22.0	2900	1.63	2.2	62	1.8	31
	28.0	7.79	20.2		2.11	3	73.2	2	
	33.7	9.35	18.5		2.32	3	73.2	3	
NSGW40/13B	15.5	4.31	18.5	2900	1.28	1.5	61	1.8	31
	25.9	7.19	17.0		1.64	2.2	73	2	
	31.1	8.63	15.3		1.77	2.2	73	3	
NSGW40/13C	14.2	3.96	15.5	2900	1.00	1.5	60	1.8	31
	23.7	6.59	13.7		1.23	1.5	72	2	
	28.5	7.91	12.2		1.31	2.2	72	3	
NSGW40/13D	12.9	3.60	12.5	2900	0.76	1.1	58	1.8	31
	21.6	5.99	11.0		0.92	1.5	70	2	
	25.9	7.19	9.5		0.97	1.5	69	3	

Pump mode	Capacity		Head m	Speed r/min	Power(kW)		Eff. %	(NPSH)r m	Pump weight kg
	m³/h	L/S			Shaft kW	Motor kW			
NSGW40/16	18.0	5.00	39.5	2900	3.39	5.5	57	1.5	34
	30.0	8.33	35.0		4.46	5.5	64	2.2	
	36.0	10.00	31.5		5.02	7.5	61.5	3.3	
NSGW40/16A	17.1	4.74	34.8	2900	2.89	4	56	1.5	34
	28.4	7.90	30.5		3.74	5.5	63.2	2.2	
	34.1	9.48	27.6		4.20	5.5	61	3.3	
NSGW40/16B	16.0	4.45	30.5	2900	2.42	4	55	1.5	34
	26.7	7.42	26.5		3.15	4	61.2	2.2	
	32.1	8.90	23.4		3.46	4	59	3.3	
NSGW40/16C	15.0	4.17	26.7	2900	2.06	3	53	1.5	34
	25.0	6.94	22.5		2.62	4	58.5	2.2	
	30.0	8.33	19.5		2.84	4	56	3.3	
NSGW40/16D	14.0	3.88	23.1	2900	1.76	3	50	1.5	34
	23.3	6.46	19.5		2.17	3	57	2.2	
	27.9	7.76	16.5		2.28	3	55	3.3	
NSGW40/16E	12.9	3.59	19.5	2900	1.43	3	48	1.5	34
	21.5	5.98	16.0		1.71	3	55	2.2	
	25.9	7.18	13.5		1.86	3	51	3.3	
NSGW40/20	18.0	5.00	61.5	2900	6.28	7.5	48	1.8	45
	30.0	8.33	56.5		7.95	11	58	2	
	36.0	10.00	53.0		8.88	11	58.5	2.7	
NSGW40/20A	17.2	4.79	55.4	2900	5.42	7.5	48	1.8	45
	28.7	7.98	51.0		6.94	11	57.5	2	
	34.5	9.58	47.3		7.65	11	58	2.7	
NSGW40/20B	16.4	4.55	49.5	2900	4.70	5.5	47	1.8	45
	27.3	7.59	47.5		6.25	7.5	56.5	2	
	32.8	9.11	42.0		6.58	11	57	2.7	
NSGW40/20C	15.6	4.32	44.6	2900	4.10	7.5	46	1.8	45
	25.9	7.20	40.5		5.15	7.5	55.5	2	
	31.1	8.64	36.5		5.62	7.5	55	2.7	
NSGW40/20D	14.7	4.09	39.9	2900	3.55	5.5	45	1.8	45
	24.5	6.81	36.0		4.45	7.5	54	2	
	29.4	8.17	32.2		4.82	7.5	53.5	2.7	
NSGW40/20E	13.9	3.85	35.4	2900	3.01	5.5	44.5	1.8	45
	23.1	6.42	31.5		3.81	5.5	52	2	
	27.7	7.71	28.2		4.14	5.5	51.5	2.7	
NSGW40/26	21.6	6.00	93.0	2900	13.67	15	40	1.8	61
	36.0	10.00	86.5		16.62	18.5	51	2	
	43.2	12.00	81.5		18.08	22	53	2.5	
NSGW40/26A	20.9	5.80	86.0	2900	12.21	15	40	1.8	61
	34.8	9.66	80.0		15.06	18.5	50.3	2	
	41.7	11.59	74.5		16.18	18.5	52.3	2.5	
NSGW40/26B	20.0	5.57	78.3	2900	10.96	15	39	1.8	61
	33.4	9.28	72.0		13.10	15	50	2.0	
	40.1	11.14	66.0		14.12	18.5	51	2.5	
NSGW40/26C	19.2	5.34	71.0	2900	9.78	15	38	1.8	61
	32.0	8.90	66.2		11.91	15	48.5	2	
	38.5	10.68	60.7		12.71	15	50	2.5	
NSGW40/26D	18.4	5.11	65.1	2900	8.58	11	38	1.8	61
	30.7	8.52	60.2		10.48	15	48	2	
	36.8	10.23	55.7		11.50	15	48.5	2.5	
NSGW40/26E	17.6	4.89	59.4	2900	7.59	11	37.5	1.8	

Standard Parameter Table of
NSGW Standard End Suction Centrifugal Pump

Pump mode	Capacity		Head m	Speed r/min	Power(kW)		Eff. %	(NPSH) _r m	Pump weight kg
	m ³ /h	L/S			Shaft	Motor			
			kW	kW					
NSGW100/20	171.0	47.50	58.7	2900	39.04	45	70	3.9	94
	285.0	79.17	50.1		48.59	55	80	5.8	
	342.0	95.00	42.0		52.49	75	74.5	6.9	
NSGW100/20A	163.8	45.50	53.2	2900	34.38	45	69	3.9	94
	273.0	75.84	44.3		41.68	55	79	5.8	
	327.6	91.01	37.0		44.90	55	73.5	6.9	
NSGW100/20B	155.8	43.28	47.0	2900	29.32	37	68	3.9	94
	259.7	72.14	38.7		35.53	45	77	5.8	
	311.6	86.57	31.5		37.91	45	70.5	6.9	
NSGW100/20C	147.8	41.06	42.0	2900	25.61	30	66	3.9	94
	246.4	68.44	33.0		30.11	37	73.5	5.8	
	295.7	82.13	26.3		31.36	37	67.5	6.9	
NSGW100/20D	139.8	38.85	37.2	2900	22.48	30	63	3.9	94
	233.1	64.74	28.7		26.01	30	70	5.8	
	279.7	77.69	21.8		25.93	30	64	6.9	
NSGW100/20E	131.9	36.63	32.0	2900	19.30	30	59.5	3.9	94
	219.8	61.04	24.0		21.27	30	67.5	5.8	
	263.7	73.25	18.0		21.54	30	60	6.9	
NSGW100/26	177.0	49.16	95.0	2900	70.42	90	65	3.9	102
	295.0	81.94	85.0		87.51	110	78	5.8	
	354.0	98.33	75.0		95.72	110	75.5	7	
NSGW100/26A	171.0	47.49	88.0	2900	63.01	75	65	3.9	102
	284.9	79.15	78.2		78.57	90	77.2	5.8	
	341.9	94.98	69.0		85.63	110	75	7	
NSGW100/26B	164.3	45.63	81.5	2900	56.94	75	64	3.9	102
	273.8	76.04	71.5		70.48	90	75.6	5.8	
	328.5	91.25	63.0		76.13	90	74	7	
NSGW100/26C	157.5	43.76	75.0	2900	51.04	75	63	3.9	102
	262.6	72.94	65.2		62.56	75	74.5	5.8	
	315.1	87.53	56.8		67.20	75	72.5	7	
NSGW100/26D	150.8	41.90	68.7	2900	45.52	55	62	3.9	102
	251.4	69.84	58.5		55.22	75	72.5	5.8	
	301.7	83.80	50.5		59.25	75	70	7	
NSGW100/26E	144.1	40.04	62.3	2900	39.75	55	61.5	3.9	102
	240.2	66.73	52.4		48.61	75	70.5	5.8	
	288.3	80.08	44.5		51.36	75	68	7	
NSGW100/26F	137.4	38.18	56.0	2900	36.12	45	58	3.9	102
	229.1	63.63	46.4		41.93	55	69	5.8	
	274.9	76.35	38.0		45.13	55	63	7	
NSGW125/20	216.0	60.00	56.5	2900	55.84	75	59.5	4.7	112
	360.0	100.00	49.0		64.89	90	74	6.5	
	432.0	120.00	42.5		68.94	90	72.5	7.2	
NSGW125/20A	206.9	57.48	51.7	2900	50.21	55	58	4.7	112
	344.9	95.79	43.6		56.46	75	72.5	6.5	
	413.8	114.95	37.0		58.46	75	71.3	7.2	
NSGW125/20B	196.8	54.67	46.3	2900	43.52	55	57	4.7	112
	328.0	91.12	37.8		47.21	55	71.5	6.5	
	393.6	109.35	31.5		48.92	55	69	7.2	
NSGW125/20C	186.7	51.87	40.6	2900	38.22	45	54	4.7	112
	311.2	86.45	32.3		39.09	45	70	6.5	
	373.5	103.74	26.2		40.36	45	66	7.2	
NSGW32/13	4.3	1.21	6.7	1450	0.17	0.55	47	1.7	29
	7.2	2.01	6.2		0.21	0.55	58	2	
	8.7	2.41	5.8		0.23	0.55	59	2.1	
NSGW32/13A	4.1	1.13	5.7	1450	0.14	0.55	46	1.7	29
	6.8	1.88	5.2		0.17	0.55	56.5	2	
	8.1	2.26	4.8		0.18	0.55	58	2.1	
NSGW32/13B	3.7	1.04	4.7	1450	0.11	0.55	45	1.7	29
	6.2	1.74	4.2		0.13	0.55	55	2	
	7.5	2.08	3.9		0.14	0.55	56	2.1	
NSGW32/16	5.2	1.45	10.6	1450	0.32	0.55	47.5	1.8	35
	8.7	2.41	10.1		0.43	0.55	55	2	
	10.4	2.89	9.5		0.48	0.75	56	2.2	
NSGW32/16A	4.9	1.37	9.5	1450	0.28	0.55	45	1.8	35
	8.2	2.29	9.0		0.37	0.55	55	2	
	9.9	2.74	8.5		0.41	0.55	55.5	2.2	
NSGW32/16B	4.6	1.29	8.4	1450	0.24	0.55	44	1.8	35
	7.7	2.15	7.8		0.31	0.55	53.5	2	
	9.3	2.58	7.3		0.34	0.55	54	2.2	
NSGW32/20	5.2	1.45	16.0	1450	0.61	0.75	37	1.9	47
	8.7	2.41	14.7		0.75	1.1	46.5	2	
	10.4	2.89	13.6		0.81	1.1	47.5	2.3	
NSGW32/20A	5.0	1.39	14.6	1450	0.55	0.75	36	1.9	47
	8.3	2.31	13.2		0.65	1.1	46	2	
	10.0	2.77	12.1		0.71	1.1	46.5	2.3	
NSGW32/20B	4.7	1.32	13.2	1450	0.49	0.75	34.5	1.9	47
	7.9	2.20	11.9		0.57	0.75	45	2	
	9.5	2.64	10.9		0.63	0.75	45	2.3	
NSGW32/26	6.6	1.83	23.7	1450	1.42	2.2	30	1.8	58
	11.0	3.05	22.4		1.76	2.2	38	2.1	
	13.2	3.66	21.4		1.92	3	40	2.4	
NSGW32/26A	6.4	1.77	21.8	1450	1.26	2.2	30	1.8	58
	10.6	2.95	20.9		1.63	2.2	37	2.1	
	12.7	3.54	19.9		1.75	2.2	39.5	2.4	
NSGW32/26B	6.1	1.70	20.2	1450	1.16	2.2	29	1.8	58
	10.2	2.83	19.3		1.45	2.2	37	2.1	
	12.2	3.40	18.5		1.58	2.2	39	2.4	

Pump mode	Capacity		Head m	Speed r/min	Power(kW)		Eff. %	(NPSH) _r m	Pump weight kg
	m ³ /h	L/S			Shaft	Motor			
			kW	kW					
NSGW40/13	8.7	2.42	6.4	1450	0.26	0.55	59	1.8	31
	14.5	4.03	6.0		0.33	0.55	71	2	
	17.4	4.84	5.6		0.37	0.55	72	2.4	
NSGW40/13A	8.1	2.26	5.6	1450	0.21	0.55	58	1.8	31
	13.6	3.77	5.2		0.27	0.55	71	2	
	16.3	4.52	4.8		0.30	0.55	71	2.4	
NSGW40/16	8.7	2.42	10.0	1450	0.40	0.55	59	1.8	34
	14.5	4.03	9.0		0.56	0.75	63	2	
	17.4	4.84	8.1		0.62	1.1	61.5	2.4	
NSGW40/16A	8.3	2.29	8.9	1450	0.35	0.55	57	1.8	34
	13.8	3.82	8.0		0.48	0.75	62	2	
	16.5	4.59	7.2		0.54	0.75	60	2.4	
NSGW40/20	8.7	2.42	15.5	1450	0.77	1.1	48	1.8	45
	14.5	4.03	14.3		0.99	1.5	57	2.2	
	17.4	4.84	13.2		1.09	1.5	57.5	2.5	
NSGW40/20A	8.3	2.32	14.0	1450	0.66	1.1	48	1.8	45
	13.9	3.86	13.0		0.88	1.1	56	2.2	
	16.7	4.63	12.0		0.96	1.5	57	2.5	
NSGW40/20B	7.9	2.20	12.7	1450	0.60	1.1	46	1.8	45
	13.2	3.67	11.6		0.76	1.1	55	2.2	
	15.9	4.41	10.8		0.84	1.1	55.5	2.5	
NSGW40/26	9.6	2.66	24.0	1450	1.65	2.2	38	1.8	61
	16.0	4.44	22.7		2.02	2.2	49	1.9	
	19.2	5.33	21.7		2.22	3	51	2.2	
NSGW40/26A	9.3	2.57	22.0	1450	1.50	2.2	37	1.8	61
	15.4	4.29	20.7		1.83	3	47.5	1.9	
	18.5	5.15	19.6		1.98	3	50	2.2	
NSGW40/26B	8.9	2.47	20.3	1450	1.37	2.2	36	1.8	61
	14.8	4.12	18.9		1.64	2.2	46.5	1.9	
	17.8	4.94	18.0		1.76	2.2	49.5	2.2	
NSGW40/26C	8.5	2.37	18.4	1450	1.26	2.2	34	1.8	61
	14.2	3.95	17.3		1.47	2.2	45.5	1.9	
	17.1	4.74	16.4		1.57	2.2	48.5	2.2	
NSGW40/26D	8.2	2.27	16.8	1450	1.13	1.5	33	1.8	61
	13.6	3.78	15.7		1.29	2.2	45	1.9	
	16.3	4.54	15.0		1.42	2.2	47	2.2	
NSGW40/32	10.8	3.00	37.5	1450	3.56	5.5	31	2.1	94
	18.0	5.00	35.6		4.36	5.5	40	2.3	
	21.6	6.00	33.8		4.73	5.5	42	2.5	
NSGW40/32A	10.3	2.87	33.9	1450	3.13	4	30.5	2.1	94
	17.2	4.79	32.0		3.75	5.5	40	2.3	
	20.7	5.74	30.5		4.09	5.5	42	2.5	
NSGW40/32B	9.8	2.74	30.6	1450	2.73	4	30	2.1	94
	16.4	4.56	29.0		3.32	4	39	2.3	
	19.7	5.47	27.6		3.61	5.5	41	2.5	
NSGW40/32C	9.4	2.60	27.8	1450	2.36	3	30	2.1	94
	15.6	4.33	26.0		2.94	4	37.5	2.3	
	18.7	5.20	24.4		3.11	4	40	2.5	
NSGW50/13	17.4	4.82	6.8	1450	0.54	0.75	59	2.2	35
	28.9	8.04	6.3		0.69	1.1	72	2.4	
	34.7	9.65	5.8		0.75	1.1	73	2.7	
NSGW50/13A	16.2	4.51	5.8	1450	0.44	0.75	58.5	2.2	35
	27.1	7.52	5.2		0.53	0.75	72	2.4	
	32.5	9.02	4.7		0.58	0.75	72	2.7	
NSGW50/16	18.5	5.15	10.5	1450	0.81	1.1	65	2.1	39
	30.9	8.58	9.5		1.08	1.5	74	2.2	
	37.1	10.30	8.8		1.27	1.5	70	2.4	
NSGW50/16A	17.6	4.88	9.4	1450	0.71	1.1	64	2.1	39
	29.3	8.14	8.5		0.93	1.5	73	2.2	
	35.1	9.76	7.8		1.02	1.5	73	2.4	
NSGW50/16B	16.5	4.59	8.3	1450	0.61	1.1	61	2.1	39
	27.5	7.64	7.5		0.78	1.1	72	2.2	
	33.0	9.17	6.9		0.86	1.1	72	2.4	
NSGW50/20	18.0	5.00	15.3	1450	1.27	2.2	59	1.3	49
	30.0	8.33	13.3		1.67	2.2	65	1.5	
	36.0								

Standard Parameter Table of
NSGW Standard End Suction Centrifugal Pump

Pump mode	Capacity		Head m	Speed r/min	Power(kW)		Eff. %	(NPSH)r m	Pump weight kg
	m³/h	L/S			Shaft kW	Motor kW			
			NSGW50/20	36.0 60.0 72.0			10.00 16.67 20.00	62.0 56.0 51.0	2900
NSGW50/20A	34.5 57.5 69.0	9.58 15.97 19.16	56.3 50.3 44.7	2900	8.81 11.53 12.82	11 15 15	60 68.3 65.5	2.2 3.2 4	49
NSGW50/20B	32.8 54.7 65.6	9.11 15.19 18.23	51.3 44.7 40.0	2900	7.77 10.01 11.16	11 15 15	59 66.5 64	2.2 3.2 4	49
NSGW50/20C	31.1 51.9 62.3	8.65 14.41 17.29	46.2 40.2 35.4	2900	6.75 8.67 9.68	11 11 11	58 65.5 62	2.2 3.2 4	49
NSGW50/20D	29.4 49.1 58.9	8.18 13.63 16.36	41.3 36.2 31.4	2900	5.86 7.56 8.60	7.5 7.5 11	56.5 64 58.5	2.2 3.2 4	49
NSGW50/20E	27.8 46.3 55.5	7.71 12.85 15.42	36.7 32.2 27.5	2900	5.14 6.76 7.42	7.5 7.5 7.5	54 60 56	2.2 3.2 4	49
NSGW50/26	39.0 65.0 78.0	10.83 18.05 21.66	97.5 91.5 87.0	2900	20.29 26.32 29.31	30 30 37	51 61.5 63	1.7 2.5 3.2	65
NSGW50/26A	37.7 62.8 75.3	10.46 17.43 20.92	90.5 84.0 79.5	2900	18.19 23.53 26.29	22 30 30	51 61 62	1.7 2.5 3.2	65
NSGW50/26B	36.2 60.3 72.4	10.05 16.75 20.10	84.0 78.0 73.0	2900	16.55 21.34 23.57	18.5 30 30	50 60 61	1.7 2.5 3.2	65
NSGW50/26C	34.7 57.8 69.4	9.64 16.07 19.28	77.5 71.0 66.0	2900	14.79 18.95 20.78	18.5 22 30	49.5 59 60	1.7 2.5 3.2	65
NSGW50/26D	33.2 55.4 66.5	9.23 15.38 18.46	71.0 65.0 60.5	2900	13.10 17.05 18.54	15 22 22	49 57.5 59	1.7 2.5 3.2	65
NSGW50/26E	31.8 52.9 63.5	8.82 14.70 17.64	65.0 59.4 55.2	2900	11.70 15.14 16.60	15 18.5 18.5	48 56.5 57.5	1.7 2.5 3.2	65
NSGW65/13	60.0 100.0 120.0	16.67 27.78 33.34	24.5 20.5 17.2	2900	5.89 7.06 7.39	7.5 11 11	68 79 76	3 3.75 4.2	41
NSGW65/13A	56.1 93.5 112.2	15.59 25.98 31.18	20.6 16.2 13.0	2900	4.63 5.38 5.59	7.5 7.5 7.5	68 76.6 71	3 3.75 4.2	41
NSGW65/13B	51.8 86.3 103.6	14.39 23.98 28.78	17.2 13.2 10.2	2900	3.68 4.25 4.29	5.5 5.5 5.5	66 73 67	3 3.75 4.2	41
NSGW65/16	60.0 100.0 120.0	16.67 27.78 33.34	39.7 34.0 29.6	2900	9.83 12.34 13.16	15 15 15	66 75 73.5	2.7 3.5 4.1	47
NSGW65/16A	56.9 94.8 113.8	15.81 26.34 31.61	36.0 30.0 25.8	2900	8.32 10.47 11.02	11 15 15	67 74 72.5	2.7 3.5 4.1	47
NSGW65/16B	53.5 89.1 106.9	14.85 24.75 29.70	32.0 26.2 21.8	2900	7.16 8.75 9.06	11 11 11	65 72.6 70	2.7 3.5 4.1	47
NSGW65/16C	50.0 83.3 100.0	13.89 23.15 27.78	28.0 22.2 18.2	2900	6.05 7.09 7.23	7.5 11 11	63 71 68.5	2.7 3.5 4.1	47
NSGW65/16D	46.6 77.6 93.1	12.93 21.55 25.86	24.2 19.2 15.5	2900	5.03 5.89 6.04	7.5 7.5 7.5	61 69 65	2.7 3.5 4.1	47
NSGW65/16E	43.1 71.8 86.2	11.97 19.96 23.95	20.7 16.0 12.8	2900	4.06 4.67 4.77	5.5 5.5 5.5	60 67 63	2.7 3.5 4.1	47
NSGW65/20	66.0 110.0 132.0	18.33 30.55 36.66	64.2 56.5 52.0	2900	19.55 23.08 25.52	22 30 30	59 73.3 73.2	2.4 3.7 5.2	60
NSGW65/20A	63.2 105.4 126.4	17.56 29.27 35.12	58.2 50.5 45.6	2900	16.15 19.84 21.65	18.5 30 30	62 73 72.5	2.4 3.7 5.2	60
NSGW65/20B	60.1 100.2 120.3	16.70 27.84 33.41	52.9 46.0 41.4	2900	14.43 17.31 18.82	18.5 22 22	60 72.5 72	2.4 3.7 5.2	60
NSGW65/20C	57.0 95.1 114.1	15.85 26.41 31.69	47.6 41.4 37.3	2900	12.32 14.88 16.19	15 22 22	60 72 71.5	2.4 3.7 5.2	60
NSGW65/20D	54.0 89.9 107.9	14.99 24.98 29.98	42.0 36.6 32.7	2900	10.46 12.62 13.63	15 18.5 18.5	59 71 70.5	2.4 3.7 5.2	60
NSGW65/20E	50.9 84.8 101.8	14.13 23.55 28.27	36.8 32.0 28.0	2900	8.94 10.55 11.41	11 15 15	57 70 68	2.4 3.7 5.2	60
NSGW65/26	72.0 120.0 144.0	20.00 33.33 40.00	98.0 89.9 82.3	2900	30.49 39.95 45.12	37 45 55	63 73.5 71.5	2.4 4.2 5.8	87

Pump mode	Capacity		Head m	Speed r/min	Power(kW)		Eff. %	(NPSH)r m	Pump weight kg
	m³/h	L/S			Shaft kW	Motor kW			
			NSGW65/26A	69.5 115.9 139.1			19.32 32.19 38.63	91.0 83.0 76.0	2900
NSGW65/26B	66.8 111.4 133.6	18.56 30.93 37.12	84.5 77.0 70.0	2900	25.19 32.19 35.86	30 37 45	61 72.5 71	2.4 4.2 5.8	87
NSGW65/26C	64.1 106.8 128.2	17.80 29.67 35.60	78.5 71.0 64.0	2900	23.21 28.87 31.67	30 37 37	59 71.5 70.5	2.4 4.2 5.8	87
NSGW65/26D	61.4 102.3 122.7	17.04 28.41 34.09	72.5 65.0 59.0	2900	20.88 25.63 28.16	30 30 37	58 70.6 70	2.4 4.2 5.8	87
NSGW65/26E	58.6 97.7 117.3	16.29 27.14 32.57	66.2 59.4 50.8	2900	18.38 23.05 24.95	27 30 30	57.5 68.5 65	2.4 4.2 5.8	87
NSGW65/26F	55.9 93.2 111.8	15.53 25.88 31.06	59.0 52.6 48.0	2900	16.32 20.37 22.48	22 30 30	55 65.5 65	2.4 4.2 5.8	87
NSGW80/16	97.2 162.0 194.4	27.00 45.00 54.00	40.3 34.7 29.3	2900	15.23 19.13 20.95	18.5 22 30	70 80 74	2.7 3.8 5	53
NSGW80/16A	92.2 153.6 184.3	25.60 42.67 51.21	34.8 29.1 24.2	2900	12.94 16.01 17.60	18.5 22 22	67.5 76 69	2.7 3.8 5	53
NSGW80/16B	86.6 144.3 173.2	24.05 40.09 48.10	30.7 24.7 20.1	2900	11.49 13.11 14.36	15 15 18.5	63 74 66	2.7 3.8 5	53
NSGW80/16C	81.0 135.0 162.0	22.50 37.50 45.00	26.9 21.6 17.4	2900	9.55 11.03 11.99	11 15 15	62 72 64	2.7 3.8 5	53
NSGW80/16D	75.4 125.7 150.8	20.95 34.91 41.90	22.8 18.2 14.4	2900	8.07 9.44 9.85	11 11 11	58 66 60	2.7 3.8 5	53
NSGW80/20	114.0 190.0 228.0	31.67 52.78 63.34	60.5 52.7 46.0	2900	28.02 35.04 38.85	37 45 45	67 77.8 73.5	3.1 4.8 5.8	76
NSGW80/20A	109.2 182.0 218.4	30.34 50.56 60.67	55.1 47.9 41.5	2900	25.20 30.78 34.04	30 37 37	65 77.1 72.5	4 4.9 5.85	76
NSGW80/20B	103.9 173.1 207.8	28.86 48.09 57.71	49.6 43.6 37.6	2900	22.62 27.04 29.54	30 30 37	62 76 72	4 4.7 5.5	76
NSGW80/20C	98.6 164.3 197.1	27.38 45.63 54.75	43.8 37.2 31.8	2900	18.95 22.48 24.73	30 30 30	62 74 69	4 4.7 5.5	76
NSGW80/20D	93.2 155.4 186.5	25.90 43.16 51.79	39.2 33.3 28.5	2900	15.07 18.53 19.26	18.5 22 30	66 76 75	4 4.7 5.5	76
NSGW80/20E	87.9 146.5 175.8	24.42 40.69 48.83	34.8 29.6 25.3	2900	12.73 15.63 16.25	15 18.5 22	65.5 75.5 74.5	4 4.7 5.5	76
NSGW80/26	114.0 190.0 228.0	31.67 52.78 63.34	95.0 83.5 74.0	2900	45.01 57.59 63.79	55 75 75	65.5 75 72	2.6 4.2 5.8	95
NSGW80/26A	110.1 183.5 220.2	30.59 50.98 61.18	87.5 76.5 69.0	2900	40.35 51.30 56.51	55 75 75	65 74.5 73.2	3.95 5.2 6.25	95
NSGW80/26B	105.8 176.3 211.6	29.39 48.98 58.78	80.1 70.0 62.0	2900	36.05 45.41 50.09	45 55 55	64 74 71.3	3.9 5 6	95
NSGW80/26C	101.5 169.1 203.0	28.19 46.98 56.38	73.3 63.0 55.1	2900	32.14 39.68 42.88	45 55 55	63 73.1 71	3.9 5 6	95
NSGW80/26D	97.2 161.9 194.3	26.99 44.98 53.98	66.5 57.0 49.6	2900	28.37 34.75 37.22	37 45 45	62 72.3 70.5	3.9 5 6	95
NSGW80/26E	92.8 154.7 185.7	25.79 42.98 51.58	60.1 50.3 44.5	2900	24.90 30.05 32.13	30 37 37	61 70.5 70	3.9 5 6	95
NSGW80/26F	88.5 147.5 177.1	24.59 40.98 49.18	54.0 45.1 39.8	2900	21.87 25.88 27.60	30 37 37	59.5 70 69.5	3.9 5 6	95
NSGW100/16	151.2 252.0 302.4	42.00 70.00 84.00	34.5 26.7 20.8	2900	21.04 23.94 24.12	30 30 30	67.5 76.5 71	4 4.6 6.1	87
NSGW100/16A	141.8 236.3 283.5	39.38 65.63 78.75	30.0 23.0 17.7	2900	17.41 19.72 20.09	22 22 22	66.5 75 68	4.9 4.9 5.4	87
NSGW100/16B	133.2 221.9 266.3	36.99 61.65 73.98	25.8 19.2 14.6	2900	14.39 16.11 16.16	18.5 18.5 18.5	65 72 65.5	4.8 4.8 5.3	87
NSGW100/16C	124.6 207.6 249.1	34.60 57.67 69.20	22.8 16.2 12.0	2900	12.08 13.08 13.13	15 15 15	64 70 62	4.7 4.7 5.2	87

Standard Parameter Table of
NSGW Standard End Suction Centrifugal Pump

Pump mode	Capacity		Head m	Speed r/min	Power(kW)		Eff. %	(NPSH) _r m	Pump weight kg
	m ³ /h	L/S			Shaft	Motor			
			kW	kW					
NSGW 50/32	30.2	8.40	35.6	1450	5.64	7.5	52	1.5	105
	50.4	14.00	31.1		7.36	11	58	2.2	
	60.5	16.80	27.8		8.32	11	55	2.7	
NSGW 50/32A	29.0	8.04	32.5	1450	4.93	7.5	52	1.5	105
	48.3	13.40	27.3		6.24	7.5	57.5	2.2	
	57.9	16.09	24.9		7.14	11	55	2.7	
NSGW 50/32B	27.6	7.66	29.4	1450	4.24	5.5	52	1.5	105
	46.0	12.77	25.1		5.51	7.5	57	2.2	
	55.1	15.32	22.4		6.23	7.5	54	2.7	
NSGW 50/32C	26.2	7.28	26.1	1450	3.58	5.5	52	1.5	105
	43.7	12.13	22.4		4.75	7.5	56	2.2	
	52.4	14.55	19.6		5.23	7.5	53.5	2.7	
NSGW 50/32D	24.8	6.89	23.0	1450	2.99	4	52	1.5	105
	41.4	11.49	19.8		3.98	5.5	56	2.2	
	49.6	13.79	17.2		4.47	5.5	52	2.7	
NSGW 50/32E	23.4	6.51	20.2	1450	2.48	4	52	1.5	105
	39.1	10.85	19.8		3.83	4	55	2.2	
	46.9	13.02	14.9		3.66	4	52	2.7	
NSGW 65/13	29.0	8.05	6.4	1450	0.78	1.1	65	2.3	41
	48.3	13.41	5.5		0.93	1.5	78	2.4	
	57.9	16.09	4.8		0.98	1.5	77	2.7	
NSGW 65/16	30.0	8.33	10.2	1450	1.26	2.2	66	2	47
	50.0	13.89	8.8		1.54	2.2	78	2.3	
	60.0	16.67	7.8		1.65	2.2	77	2.6	
NSGW 65/16A	28.5	7.90	9.2	1450	1.08	1.5	65.5	2	47
	47.4	13.17	7.5		1.26	2.2	77	2.3	
	56.9	15.81	6.7		1.38	2.2	75	2.6	
NSGW 65/20	33.0	9.16	15.6	1450	2.15	3	65	1.7	60
	55.0	15.27	13.7		2.83	4	72.5	1.9	
	66.0	18.32	11.4		2.88	4	71	2.1	
NSGW 65/20A	31.6	8.78	14.1	1450	1.89	3	64	1.7	60
	52.7	14.63	12.4		2.45	3	72.5	1.9	
	63.2	17.55	11.1		2.65	3	72	2.1	
NSGW 65/20B	30.1	8.35	12.8	1450	1.68	2.2	62	1.7	60
	50.1	13.91	11.2		2.12	3	72	1.9	
	60.1	16.70	10.0		2.28	3	72	2.1	
NSGW 65/20C	28.5	7.92	11.4	1450	1.47	2.2	60	1.7	60
	47.5	13.20	10.0		1.81	2.2	71.5	1.9	
	57.0	15.84	9.0		1.98	2.2	71	2.1	
NSGW 65/26	36.0	10.00	24.6	1450	4.09	5.5	59	1.7	87
	60.0	16.67	23.0		5.22	7.5	72	1.9	
	72.0	20.00	21.7		5.83	7.5	73	2	
NSGW 65/26A	34.8	9.66	22.7	1450	3.64	5.5	59	1.7	87
	58.0	16.10	21.5		4.70	7.5	72	1.9	
	69.6	19.32	20.0		5.19	7.5	73	2	
NSGW 65/26B	33.4	9.28	21.0	1450	3.29	4	58	1.7	87
	55.7	15.47	19.8		4.23	5.5	71	1.9	
	66.8	18.56	18.3		4.59	5.5	72.5	2	
NSGW 65/26C	32.1	8.90	19.6	1450	3.00	4	57	1.7	87
	53.4	14.84	18.2		3.79	5.5	70	1.9	
	64.1	17.81	17.0		4.12	5.5	72	2	
NSGW 65/26D	30.7	8.52	18.1	1450	2.70	4	56	1.7	87
	51.1	14.21	16.7		3.37	5.5	69	1.9	
	61.4	17.05	15.3		3.70	5.5	69	2	
NSGW 65/32	39.0	10.84	37.0	1450	7.28	11	54	1.9	120
	65.0	18.06	34.0		9.40	11	64	2	
	78.0	21.67	31.7		10.36	15	65	2.1	
NSGW 65/32A	37.3	10.37	33.4	1450	6.35	7.5	53.5	1.9	120
	62.2	17.29	30.6		8.10	11	64	2	
	74.7	20.75	28.4		8.95	11	64.5	2.1	
NSGW 65/32B	35.6	9.88	30.0	1450	5.48	7.5	53	1.9	120
	59.3	16.47	27.2		6.86	11	64	2	
	71.1	19.76	24.8		7.50	11	64	2.1	
NSGW 65/32C	33.8	9.39	27.0	1450	4.78	7.5	52	1.9	120
	56.3	15.64	24.2		5.84	7.5	63.5	2	
	67.6	18.77	21.8		6.32	7.5	63.5	2.1	
NSGW 65/32D	32.0	8.89	24.2	1450	4.18	5.5	50.5	1.9	12
	53.4	14.82	21.4		4.97	7.5	62.5	2	
	64.0	17.79	19.0		5.34	7.5	62	2.1	
NSGW 65/32E	30.2	8.40	21.1	1450	3.54	5.5	49	1.9	120
	50.4	14.00	19.0		4.20	5.5	62	2	
	60.5	16.80	16.6		4.55	5.5	60	2.1	
NSGW 80/16	48.0	13.33	9.9	1450	1.96	3	66	2.3	53
	80.0	22.22	8.8		2.46	3	78	2.5	
	96.0	26.66	7.9		2.68	3	77	3.7	
NSGW 80/16A	45.5	12.64	8.7	1450	1.66	2.2	65	2.3	53
	75.9	21.07	7.5		2.00	3	77.5	2.5	
	91.0	25.28	6.5		2.15	3	75	3.7	
NSGW 80/16B	42.8	11.88	7.5	1450	1.39	2.2	63	2.3	53
	71.3	19.79	6.3		1.60	2.2	76.5	2.5	
	85.5	23.75	5.3		1.73	2.2	71.5	3.7	
NSGW 80/20	57.0	15.83	15.4	1450	3.46	5.5	69	1.9	76
	95.0	26.39	14.1		4.50	5.5	81	2	
	114.0	31.67	13.1		4.99	7.5	81.5	2.4	
NSGW 80/20A	54.6	15.17	14.0	1450	3.06	4	68	1.9	76
	91.0	25.28	12.7		3.88	5.5	81	2	
	109.2	30.34	11.6		4.26	5.5	81	2.4	

Pump mode	Capacity		Head m	Speed r/min	Power(kW)		Eff. %	(NPSH) _r m	Pump weight kg
	m ³ /h	L/S			Shaft	Motor			
			kW	kW					
NSGW 80/20B	51.9	14.43	12.6	1450	2.74	4	65	1.9	76
	86.6	24.05	11.2		3.30	4	80	2	
	103.9	28.86	10.1		3.57	4	80	2.4	
NSGW 80/20C	49.3	13.69	11.3	1450	2.41	3	63	1.9	76
	82.1	22.81	10.0		2.85	4	78.5	2	
	98.6	27.38	8.8		3.03	4	78	2.4	
NSGW 80/26	57.0	15.83	24.0	1450	5.64	7.5	66	1.6	95
	95.0	26.39	21.5		7.32	11	76	2	
	114.0	31.67	19.5		8.07	11	75	2.4	
NSGW 80/26A	55.1	15.29	22.4	1450	4.94	7.5	68	1.6	95
	91.8	25.49	20.1		6.68	11	75	2	
	110.1	30.59	17.9		7.45	11	72	2.4	
NSGW 80/26B	52.9	14.69	20.7	1450	4.44	5.5	67	1.6	95
	88.2	24.49	18.2		5.79	7.5	75.5	2	
	105.8	29.39	16.3		6.34	7.5	74	2.4	
NSGW 80/26C	50.7	14.09	19.2	1450	3.99	5.5	66.5	1.6	95
	84.6	23.49	16.5		5.06	7.5	75	2	
	101.5	28.19	14.7		5.56	7.5	73	2.4	
NSGW 80/32	60.0	16.67	35.8	1450	10.08	15	58	1.5	130
	100.0	27.78	33.4		13.18	18.5	69	1.8	
	120.0	33.34	31.3		14.40	18.5	71	2	
NSGW 80/32A	57.5	15.96	32.5	1450	8.92	11	57	1.5	130
	95.8	26.60	30.1		11.21	15	70	1.8	
	114.9	31.92	28.4		12.56	15	70.7	2	
NSGW 80/32B	54.7	15.20	29.7	1450	7.83	11	56.5	1.5	130
	91.2	25.33	27.5		9.75	15	70	1.8	
	109.4	30.40	25.6		10.79	15	70.7	2	
NSGW 80/32C	52.0	14.44	26.8	1450	6.77	11	56	1.5	130
	86.6	24.06	24.9		8.38	11	70.1	1.8	
	104.0	28.88	22.8		9.14	11	70.6	2	
NSGW 80/32D	49.2	13.68	23.3	1450	5.58	7.5	56	1.5	130
	82.1	22.80	21.5		6.83	11	70.3	1.8	
	98.5	27.36	19.7		7.50	11	70.4	2	
NSGW 80/32E	46.5	12.92	20.4	1450	4.53	5.5	57	1.5	130
	77.5	21.53	18.8		5.63	7.5	70.5	1.8	
	93.0	25.84	17.1		6.15	7.5	70.4	2	
NSGW 80/40	60.0	16.67	56.5	1450	17.92	22	51.5	1.8	160
	100.0	27.78	52.2		23.11	30	61.5	2	
	120.0	33.34	47.8		25.52	30	61.2	2.3	
NSGW 80/40A	58.0	16.10	52.1	1450	15.81	22	52	2.2	160
	96.6	26.83	47.8		20.44	30	61.5	2.4	
	115.9	32.19	44.2		22.82	30	61.1	3.2	
NSGW 80/40B	55.8	15.49	48.3	1450	14.37	18.5	51	2.2	160
	92.9	25.81	44.2		18.18	22	61.5	2.4	
	111.5	30.97	40.2		20.34	30	60	3	
NSGW 80/40C	53.5	14.87	44.2	1450	12.51	15	51.5	2.2	160
	89.2	24.79	40.2		15.93	18.5	61.3	2.3	
	107.1	29.75	36.7		17.83	22	60	2.8	
NSGW 80/40D	51.3	14.26	40.2	1450	11.02	15	51	2.2	160
	85.6	23.77	36.5		14.08	18.5	60.4	2.3	
	102.7	28.53	33.3		15.73	22	59.2	2.8	
NSGW 80/40E	49.1	13.65	36.8	1450	9.95	15	49.5	2.2	160
	81.9	22.75	33.5		12.53	15	59.6	2.3	
	98.3	27.30	30.4		13.86	18.5	58.7	2.8	
NSGW 80/40F	46.9	13.04	33.2	1450	8.84	11	48	2.2	160
	78.2	21.73	30.4		11.11	15	58.3	2.3	
	93.9	26.08	27.8		12.40	15	57.3	2.8	
NSGW 100/16	75.6	21.00	8.8	1450	2.70	4	67	2	87
	126.0	35.00	7.2		3.05	4	81	2.1	
	151.2	42.00	5.8		3.11	4	76.2	2.7	
NSGW 100/16A	70.9	19.69	7.8	1450	2.21	3	68	2	87
	118.1	32.81	6.2		2.51	3	79.5	2.1	
	141.8	39.38	5.5		2.70	3	78.5	2.7	
NSGW 100/20	85.2	23.66	14.9	1450	4.94	7.5	70	1.7	94
	142.0	39.44	1						

Standard Parameter Table of
NSGW Standard End Suction Centrifugal Pump

Pump mode	Capacity		Head m	Speed r/min	Power(kW)		Eff. %	(NPSH)r m	Pump weight kg
	m³/h	L/S			Shaft kW	Motor kW			
NSGW 100/32	81.0	22.50	38.0	1450	12.32	15	68	2	118
	135.0	37.50	34.0		16.10	22	77.6	2.2	
	162.0	45.00	30.2		18.24	22	73	2.7	
NSGW 100/32A	77.6	21.54	34.4	1450	10.84	15	67	2	118
	129.3	35.90	31.0		14.31	18.5	76.2	2.2	
	155.1	43.09	27.6		16.19	22	72	2.7	
NSGW 100/32B	73.9	20.52	31.1	1450	9.47	15	66	2	118
	123.1	34.19	28.0		12.68	18.5	74	2.2	
	147.7	41.03	25.0		14.16	18.5	71	2.7	
NSGW 100/32C	70.2	19.49	28.2	1450	8.29	11	65	2	118
	116.9	32.48	25.0		11.13	15	71.5	2.2	
	140.3	38.98	22.1		12.70	15	66.5	2.7	
NSGW 100/32D	66.5	18.47	25.7	1450	7.50	11	62	2	118
	110.8	30.78	22.3		9.89	11	68	2.2	
	132.9	36.93	19.8		11.13	15	64.5	2.7	
NSGW 100/40	90.7	25.20	56.8	1450	22.62	30	62	1.5	176
	151.2	42.00	51.8		30.03	37	71	1.8	
	181.4	50.40	47.0		34.39	45	67.5	2.1	
NSGW 100/40A	87.6	24.34	52.4	1450	20.49	30	61	1.5	176
	146.0	40.56	47.4		27.11	37	69.5	1.8	
	175.2	48.67	42.6		30.79	37	66	2.1	
NSGW 100/40B	84.3	23.41	48.2	1450	18.43	30	60	1.5	176
	140.5	39.02	43.4		24.77	37	67	1.8	
	168.6	46.83	38.8		27.18	37	65.5	2.1	
NSGW 100/40C	81.0	22.49	44.5	1450	16.91	22	58	1.5	176
	134.9	37.48	39.5		21.82	30	66.5	1.8	
	161.9	44.98	35.0		24.11	30	64	2.1	
NSGW 100/40D	77.6	21.56	40.6	1450	14.92	18.5	57.5	1.5	176
	129.4	35.94	35.9		19.45	22	65	1.8	
	155.3	43.13	31.7		21.44	30	62.5	2.1	
NSGW 100/40E	74.3	20.64	37.5	1450	13.55	18.5	56	1.5	176
	123.8	34.40	32.9		17.33	22	64	1.8	
	148.6	41.28	28.8		19.10	22	61	2.1	
NSGW 100/40F	71.0	19.72	34.0	1450	11.94	15	55	1.5	176
	118.3	32.86	29.8		15.23	18.5	63	1.8	
	142.0	39.43	25.8		16.90	22	59	2.1	
NSGW 125/20	114.5	31.80	15.0	1450	7.54	11	62	1.3	112
	190.8	53.00	13.3		8.74	11	79	1.7	
	229.0	63.60	11.7		9.29	11	78.5	1.85	
NSGW 125/20A	109.7	30.46	13.3	1450	6.51	11	61	1.3	112
	182.8	50.77	11.5		7.43	11	77	1.7	
	219.3	60.93	9.9		7.78	11	76	1.85	
NSGW 125/20B	104.3	28.98	11.7	1450	5.63	7.5	59	1.3	112
	173.9	48.29	9.7		6.12	7.5	75	1.7	
	208.6	57.95	8.1		6.39	7.5	72	1.85	
NSGW 125/26	144.0	40.00	24.0	1450	13.25	18.5	71	2.2	117
	240.0	66.67	22.2		17.27	22	84	2.8	
	288.0	80.00	20.5		19.25	22	83.5	3.3	
NSGW 125/26A	139.1	38.64	21.9	1450	11.68	15	71	2.2	117
	231.8	64.40	20.1		15.19	18.5	83.5	2.8	
	278.2	77.28	18.3		16.70	22	83	3.3	
NSGW 125/26B	133.6	37.12	20.0	1450	10.39	15	70	2.2	117
	222.7	61.87	18.3		13.37	18.5	83	2.8	
	267.3	74.25	16.5		14.73	18.5	81.5	3.3	
NSGW 125/26C	128.2	35.61	18.3	1450	9.12	11	70	2.2	117
	213.6	59.35	16.4		11.78	15	81	2.8	
	256.4	71.22	14.5		12.65	15	80	3.3	
NSGW 125/32	120.1	33.36	35.0	1450	17.60	22	65	1.7	155
	200.2	55.60	32.7		22.41	30	79.5	2.2	
	240.2	66.72	30.8		24.86	30	81	2.7	
NSGW 125/32A	115.0	31.94	31.9	1450	15.36	18.5	65	1.7	155
	191.6	53.23	29.9		19.75	30	79	2.2	
	230.0	63.88	28.2		22.07	30	80	2.7	
NSGW 125/32B	109.5	30.42	29.0	1450	13.40	18.5	64.5	1.7	155
	182.5	50.70	27.0		17.09	22	78.5	2.2	
	219.0	60.84	25.5		19.00	22	80	2.7	
NSGW 125/32C	104.0	28.90	26.2	1450	11.59	15	64	1.7	155
	173.4	48.16	24.4		14.77	18.5	78	2.2	
	208.1	57.80	22.9		16.21	18.5	80	2.7	
NSGW 125/32D	98.6	27.38	23.2	1450	9.73	11	64	1.7	155
	164.3	45.63	21.4		12.59	15	76	2.2	
	197.1	54.76	19.9		13.69	15	78	2.7	
NSGW 125/32E	93.1	25.86	20.6	1450	8.42	11	62	1.7	155
	155.1	43.09	18.8		10.73	15	74	2.2	
	186.2	51.71	17.3		11.54	15	76	2.7	
NSGW 125/40	147.0	40.83	56.6	1450	34.84	45	65	1.5	178
	245.0	68.05	52.5		47.00	55	74.5	2.8	
	294.0	81.66	48.7		52.67	75	74	4	
NSGW 125/40A	142.0	39.43	51.9	1450	31.34	37	64	1.5	178
	236.6	65.72	47.6		42.00	55	73	2.8	
	283.9	78.86	43.8		46.69	55	72.5	4	
NSGW 125/40B	136.6	37.93	47.7	1450	28.15	37	63	1.5	178
	227.6	63.22	43.1		37.35	45	71.5	2.8	
	273.1	75.87	39.7		41.57	45	71	4	
NSGW 125/40C	131.2	36.44	43.4	1450	25.00	30	62	1.5	178
	218.6	60.73	39.8		33.36	37	71	2.8	
	262.4	72.88	36.5		37.24	45	70	4	

Pump mode	Capacity		Head m	Speed r/min	Power(kW)		Eff. %	(NPSH)r m	Pump weight kg
	m³/h	L/S			Shaft kW	Motor kW			
NSGW125/40D	125.8	34.94	39.9	1450	22.40	30	61	1.5	178
	209.6	58.23	36.6		30.27	37	69	2.8	
	251.6	69.88	33.2		33.44	37	68	4	
NSGW125/40E	120.4	33.44	36.8	1450	20.10	30	60	1.5	178
	200.7	55.74	33.5		27.31	30	67	2.8	
	240.8	66.89	30.1		29.45	37	67	4	
NSGW125/40F	115.0	31.95	33.3	1450	17.67	22	59	1.5	178
	191.7	53.24	30.1		23.80	30	66	2.8	
	230.0	63.89	27.0		26.01	30	65	4	
NSGW125/50	172.8	48.00	95.1	1450	75.82	90	59	2	300
	288.0	80.00	93.8		103.58	132	71	2.6	
	345.6	96.00	91.0		118.09	160	72.5	3.9	
NSGW125/50A	164.6	45.71	86.7	1450	65.83	75	59	2	300
	274.3	76.19	85.5		90.55	110	70.5	2.6	
	329.1	91.43	83.1		102.70	132	72.5	3.9	
NSGW125/50B	156.3	43.43	78.1	1450	56.82	75	58.5	2	300
	260.6	72.38	76.8		77.82	90	70	2.6	
	312.7	86.86	74.6		88.19	110	72	3.9	
NSGW125/50C	148.1	41.14	69.9	1450	48.59	55	58	2	300
	246.9	68.57	68.5		66.71	75	69	2.6	
	296.2	82.29	66.6		74.59	90	72	3.9	
NSGW125/50D	139.9	38.86	61.9	1450	41.35	55	57	2	300
	233.1	64.76	60.7		56.24	75	68.5	2.6	
	279.8	77.71	59.0		62.85	75	71.5	3.9	
NSGW125/50E	131.7	36.57	54.2	1450	34.08	45	57	2	300
	219.4	60.95	52.8		47.07	55	67	2.6	
	263.3	73.14	51.4		51.89	75	71	3.9	
NSGW150/20	216.0	60.00	14.1	1450	13.37	18.5	62	3	132
	360.0	100.00	12.2		14.95	18.5	80	3.5	
	432.0	120.00	10.6		16.51	18.5	75.5	4	
NSGW150/20A	206.9	57.48	12.8	1450	11.82	15	61	3	132
	344.9	95.79	10.8		13.00	15	78	3.5	
	413.8	114.95	9.2		14.20	18.5	73	4	
NSGW150/20B	196.8	54.67	11.5	1450	10.44	15	59	3	132
	328.0	91.12	9.5		11.24	15	75.5	3.5	
	393.6	109.35	7.8		11.94	15	70	4	
NSGW150/20C	186.7	51.87	10.2	1450	9.10	11	57	3	132
	311.2	86.45	8.2		9.78	15	71	3.5	
	373.5	103.74	6.6		10.32	15	65	4	
NSGW150/20D	176.6	49.07	8.9	1450	8.07	11	53	3	132
	294.4	81.78	6.9		8.38	11	66	3.5	
	353.3	98.13	5.3		8.64	11	59	4	
NSGW150/26	194.4	54.00	23.1	1450	16.98	22	72	1.7	163
	324.0	90.00	21.0		22.73	30	81.5	2.1	
	388.8	108.00	17.9		25.26	30	75	4	
NSGW150/26A	187.8	52.16	21.2	1450	15.05	18.5	72	1.7	163
	313.0	86.93	18.9		20.38	30	79	2.1	
	375.5	104.32	15.6		22.15	30	72	4	
NSGW150/26B	180.4	50.11	19.3	1450	13.35	18.5	71	1.7	163
	300.7	83.52	16.7		17.75	22	77	2.1	
	360.8	100.23	13.4		19.36	22	68	4	
NSGW150/26C	173.0	48.07	17.6	1450	11.84	15	70	1.7	163
	288.4	80.11	14.7		15.49	18.5	74.5	2.1	
	346.1	96.14	11.2		16.49	18.5	64	4	
NSGW150/26D	165.7	46.02	15.9	1450	10.70	15	67	1.7	163
	276.1	76.70	12.6		13.15	18.5	72	2.1	
	331.4	92.05	9.3		14.22	18.5	59	4	
NSGW150/26E	158.3	43.98	14.2	1450	9.42	11	65	1.7	163
	263.9	73.30	10.3		11.56	15	64	2.1	
	316.6	87.95	7.1		12.00	15	51	4	
NSGW150/32	222.0	61.67	36.0	1450	29				

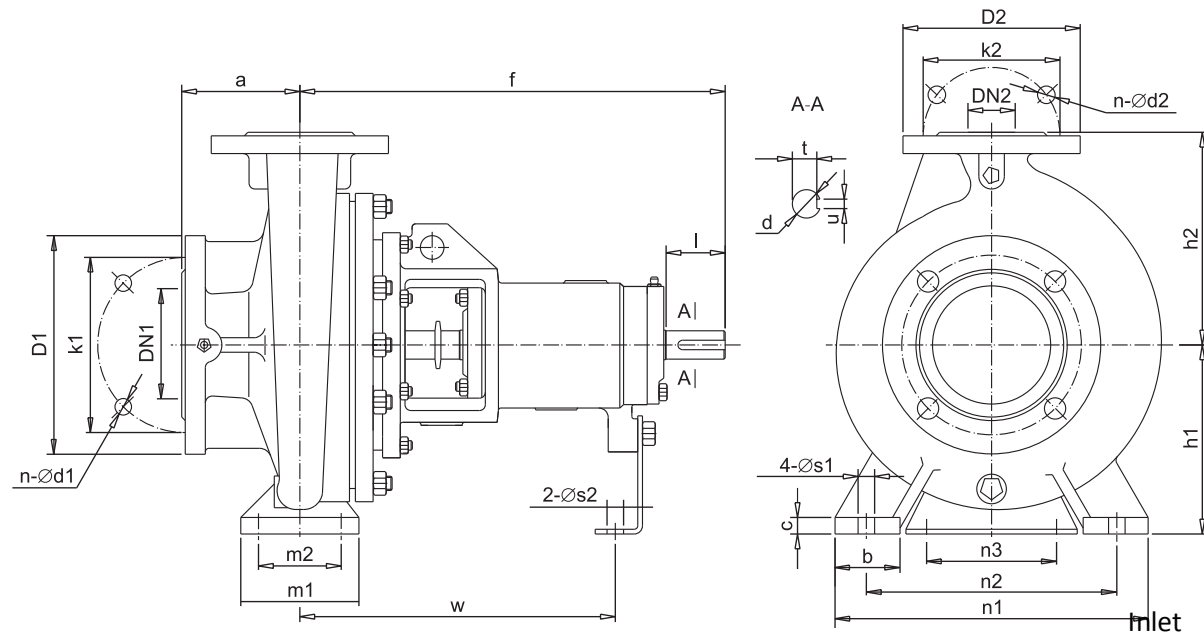
Standard Parameter Table of
NSGW Standard End Suction Centrifugal Pump

Pump mode	Capacity		Head m	Speed r/min	Power(kW)		Eff. %	(NPSH) _r m	Pump weight kg
	m ³ /h	L/S			Shaft	Motor			
			kW	kW					
NSGW150/40C	206.1	57.26	42.4	1450	36.05	45	66	2	207
	343.6	95.44	37.7		45.79	55	77	3.3	
	412.3	114.52	32.8		49.75	55	74	4.6	
NSGW150/40D	197.7	54.91	38.6	1450	31.95	37	65	2	207
	329.4	91.51	34.1		40.24	45	76	3.3	
	395.3	109.82	29.6		42.19	45	75.5	4.6	
NSGW150/40E	189.2	52.55	35.4	1450	28.49	37	64	2	207
	315.3	87.59	31.2		36.69	45	73	3.3	
	378.4	105.11	27.0		38.63	45	72	4.6	
NSGW150/40F	180.7	50.20	32.1	1450	24.87	30	63.5	2	207
	301.2	83.67	28.4		31.90	37	73	3.3	
	361.5	100.40	24.4		33.35	37	72	4.6	
NSGW150/50	289.4	80.40	98.0	1450	115.25	132	67	2.2	330
	482.4	134.00	93.8		156.91	200	78.5	4.1	
	578.9	160.80	89.5		178.53	200	79	6	
NSGW150/50A	275.7	76.57	88.9	1450	100.32	132	66.5	2.2	330
	459.4	127.62	84.8		135.97	160	78	4.1	
	551.3	153.14	80.5		154.89	160	78	6	
NSGW150/50B	261.9	72.74	80.3	1450	86.73	110	66	2.2	330
	436.5	121.24	75.8		118.50	160	76	4.1	
	523.7	145.49	71.7		134.51	160	76	6	
NSGW150/50C	248.1	68.91	72.0	1450	74.81	90	65	2.2	330
	413.5	114.86	67.3		101.00	132	75	4.1	
	496.2	137.83	63.2		113.82	132	75	6	
NSGW150/50D	234.3	65.09	63.4	1450	63.19	75	64	2.2	330
	390.5	108.48	58.9		84.61	110	74	4.1	
	468.6	130.17	55.0		94.81	110	74	6	
NSGW150/50E	220.5	61.26	55.8	1450	53.17	75	63	2.2	330
	367.5	102.10	51.8		71.98	90	72	4.1	
	441.1	122.51	48.4		79.60	90	73	6	
NSGW200/26	259.2	72.00	20.4	1450	23.22	30	62	3	219
	432.0	120.00	16.1		23.67	30	80	4.5	
	518.4	144.00	12.8		23.77	30	76	5.5	
NSGW200/26A	243.0	67.50	16.8	1450	18.52	22	60	3	219
	405.0	112.50	13.2		19.15	22	76	4.5	
	486.0	135.00	10.4		19.38	22	71	5.5	
NSGW200/26B	229.5	63.75	13.3	1450	14.58	18.5	57	3	219
	382.5	106.25	10.1		15.02	18.5	70	4.5	
	459.0	127.50	7.5		15.11	18.5	62	5.5	
NSGW200/32	378.0	105.00	32.1	1450	45.25	55	73	3.5	286
	630.0	175.00	27.9		56.96	75	84	4	
	756.0	210.00	23.6		61.87	75	78.5	4.7	
NSGW200/32A	361.9	100.53	29.2	1450	39.96	45	72	3.5	286
	603.2	167.55	25.0		50.06	55	82	4	
	723.8	201.06	21.0		53.74	55	77	4.7	
NSGW200/32B	344.7	95.74	26.7	1450	36.31	45	69	3.5	286
	574.5	159.57	23.2		44.79	55	81	4	
	689.4	191.49	20.0		47.81	55	78.5	4.7	
NSGW200/32C	327.4	90.96	24.0	1450	31.93	37	67	3.5	286
	545.7	151.60	20.1		37.80	45	79	4	
	654.9	181.91	16.8		39.93	45	75	4.7	
NSGW200/32D	310.2	86.17	21.5	1450	27.93	37	65	3.5	286
	517.0	143.62	17.7		32.78	37	76	4	
	620.4	172.34	14.6		34.01	37	72.5	4.7	
NSGW200/32E	293.0	81.38	19.0	1450	24.44	30	62	3.5	286
	488.3	135.64	15.6		28.41	37	73	4	
	586.0	162.77	12.7		28.94	37	70	4.7	
NSGW200/40	391.0	108.60	55.5	1450	80.91	90	73	3.1	328
	651.6	181.00	49.5		104.53	132	84	3.9	
	781.9	217.20	41.8		112.63	132	79	4.9	
NSGW200/40A	377.6	104.88	51.7	1450	73.81	90	72	3.1	328
	629.3	174.80	45.7		94.32	110	83	3.9	
	755.2	209.77	38.2		101.98	110	77	4.9	
NSGW200/40B	363.2	100.90	47.7	1450	66.43	75	71	3.1	328
	605.4	168.17	42.0		83.39	110	83	3.9	
	726.5	201.80	34.7		89.70	110	76.5	4.9	
NSGW200/40C	348.9	96.92	43.3	1450	58.75	75	70	3.1	328
	581.5	161.53	37.7		72.78	90	82	3.9	
	697.8	193.83	31.0		78.52	90	75	4.9	
NSGW200/40D	334.6	92.93	39.7	1450	52.40	75	69	3.1	328
	557.6	154.89	34.3		65.08	75	80	3.9	
	669.1	185.87	27.4		69.32	75	72	4.9	
NSGW200/40E	320.2	88.95	36.4	1450	47.36	55	67	3.1	328
	533.7	148.25	31.0		56.65	75	79.5	3.9	
	640.4	177.90	24.0		60.64	75	69	4.9	
NSGW200/40F	305.9	84.97	33.4	1450	42.79	55	65	3.1	328
	509.8	141.61	28.2		51.50	75	76	3.9	
	611.8	169.94	21.5		54.25	75	66	4.9	
NSGW200/50	414.7	115.20	88.5	1450	153.71	200	65	2	450
	691.2	192.00	84.0		195.13	250	81	3.2	
	829.4	230.40	80.2		219.50	250	82.5	4	
NSGW200/50A	395.0	109.71	80.7	1450	133.49	160	65	2	450
	658.3	182.86	76.6		170.52	200	80.5	3.2	
	789.9	219.43	72.8		190.91	250	82	4	
NSGW200/50B	375.2	104.23	72.6	1450	115.87	132	64	2	450
	625.4	173.71	69.0		146.83	160	80	3.2	
	750.4	208.46	65.5		163.18	200	82	4	

Pump mode	Capacity		Head m	Speed r/min	Power(kW)		Eff. %	(NPSH) _r m	Pump weight kg
	m ³ /h	L/S			Shaft	Motor			
			kW	kW					
NSGW200/50C	355.5	98.74	64.6	1450	100.83	132	62	2	450
	592.5	164.57	62.0		124.99	160	80	3.2	
	710.9	197.49	59.0		140.97	160	81	4	
NSGW200/50D	335.7	93.26	57.7	1450	85.05	110	62	2	450
	559.5	155.43	55.0		106.05	132	79	3.2	
	671.5	186.51	52.0		119.56	132	79.5	4	
NSGW200/50E	316.0	87.77	50.5	1450	72.40	90	60	2	450
	526.6	146.29	48.3		89.93	110	77	3.2	
	632.0	175.54	45.7		99.52	110	79	4	
NSGW250/32	493.1	136.98	31.2	1450	67.55	75	62	4.2	366
	821.9	228.30	27.0		71.91	90	84	5.2	
	986.3	273.96	24.0		76.71	90	84	5.9	
NSGW250/32A	472.1	131.15	28.4	1450	59.84	75	61	4.2	366
	786.9	218.59	24.5		62.48	75	84	5.2	
	944.3	262.30	21.0		65.83	75	82	5.9	
NSGW250/32B	449.7	124.91	25.3	1450	51.62	75	60	4.2	366
	749.4	208.18	21.1		53.14	75	81	5.2	
	899.3	249.81	18.0		55.78	75	79	5.9	
NSGW250/32C	427.2	118.66	22.1	1450	45.89	55	56	4.2	366
	712.0	197.77	18.0		45.60	55	76.5	5.2	
	854.4	237.32	15.1		46.83	55	75	5.9	
NSGW250/32D	404.7	112.42	19.0	1450	39.49	45	53	4.2	366
	674.5	187.36	14.8		39.38	45	69	5.2	
	809.4	224.83	12.0		39.46	45	67	5.9	
NSGW250/32E	382.2	106.17	15.6	1450	31.21	37	52	4.2	366
	637.0	176.95	11.3		30.62	37	64	5.2	
	764.4	212.34	8.8		31.04	37	59	5.9	
NSGW250/40	529.0	146.94	53.8	1450	103.30	132	75	3.5	396
	881.6	244.90	46.6		127.09	160	88	4.8	
	1058.0	293.88	38.3		136.18	160	81	6.2	
NSGW250/40A	510.9	141.91	50.6	1450	94.46	110	74.5	3.5	396
	851.5	236.52	43.4		115.63	132	87	4.8	
	1021.8	283.82	35.6		123.01	132	80.5	6.2	
NSGW250/40B	491.5	136.52	47.5	1450	85.30	110	74.5	3.5	396
	819.1	227.54	41.3		105.85	132	87	4.8	
	983.0	273.04	35.0		114.21	132	82	6.2	
NSGW250/40C	472.1	131.13	43.5	1450	74.54	90	75	3.5	396
	786.8	218.55	36.9		91.90	110	86	4.8	
	944.2	262.26	30.4		97.67	110	80	6.2	
NSGW250/40D	452.7	125.74	40.0	1450	65.72	75	75	3.5	396
	754.5	209.57	33.3		82.40	110	83	4.8	
	905.4	251.49	27.2		84.86	110	79	6.2	
NSGW250/40E	433.3	120.35	36.6	1450	58.34	75	74	3.5	396
	722.1	200.59	30.0		72.36	90	81.5	4.8	
	866.6	240.71	23.8		72.91	90	77	6.2	
NSGW250/40F	414.0	115.00	33.2	1450	52.00	75	72	3.5	396
	690.0	191.60	27.0		63.30	75	80	4.8	
	828.0	230.00	21.2		63.00	75	76	6.2	
NSGW250/50	587.5	163.20	87.5	1450	199.92	250	70	2.5	550
	979.2	272.00	81.5		260.18	315	83.5	3.7	
	1175.0	326.40	75.5		284.12	315	85	4.7	
NSGW250/50A	559.5	155.43	79.8	1450	176.16	200	69	2.5	550
	932.6	259.05	74.5		227.05	250	83.3	3.7	
	1119.1	310.86	69.0		250.24	315	84	4.7	
NSGW250/50B	531.6	147.66	75.0	1450	157.29	200	69	2.5	550
	885.9	246.10	67.5		195.66	250	83.2	3.7	
	1063.1	295.31	62.7		216.02	250	84	4.7	
NSGW250/50C	503.6	139.89	65.0	1450	133.00	160	67	2.5	550
	839.3	233.14	60.5		166.54	200	83	3.7	
	1007.2	279.77	56.0		182.78	200	84		

NSGW Pumps

Outline Dimension Table Of NSGW Type
Standard End Suction Pump (Completed Pump Unit)



Flange standard size PN1.6

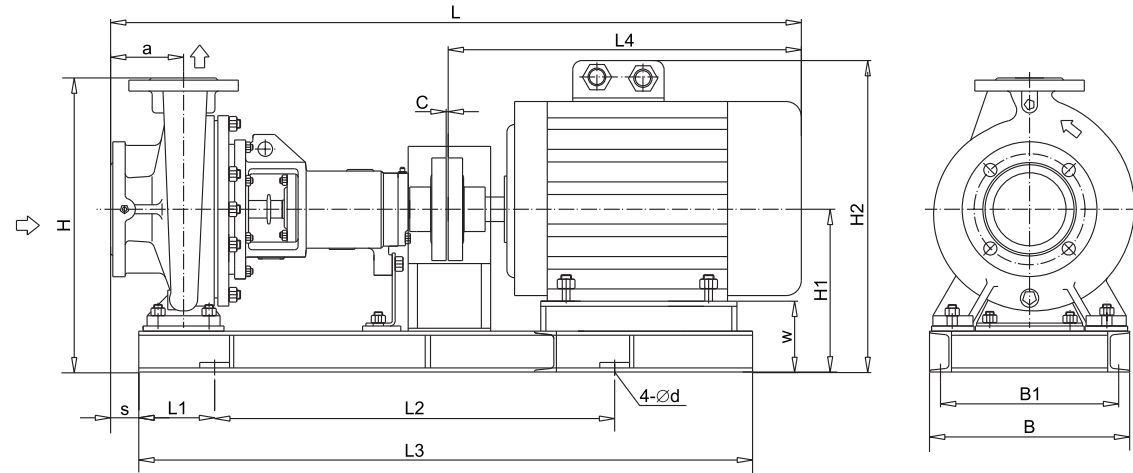
DN1/DN2	32	40	50	65	80	100	125	150	200	250	300	350	400
D1/D2	140	150	165	185	200	220	250	285	340	405	460	520	580
K1/K2	100	110	125	145	160	180	210	240	295	355	410	470	525
n-d1 / n-d2	4-Φ18	4-Φ18	4-Φ18	4-Φ18	8-Φ18	8-Φ18	8-Φ18	8-Φ22	12-Φ22	12-Φ26	12-Φ26	16-Φ26	16-Φ30

Model	Bearing inner diameter	Inlet		Outlet		a	f	h1	h2	b	c	n3	m1	m2	n1	n2	S1	S2	w	d	l	t	u
		DN2	DN1	DN2	DN1																		
NSGW32/13	25	32	50	80	360	112	140	50	14	100	100	70	190	140	14	14	267	24	50	27	8		
NSGW32/16	25	32	50	80	360	132	160	50	14	100	100	70	240	190	14	14	267	24	50	27	8		
NSGW32/20	25	32	50	80	360	160	180	50	14	110	100	70	240	190	14	14	267	24	50	27	8		
NSGW32/26	25	32	50	100	360	180	225	65	14	110	125	95	320	250	14	14	267	24	50	27	8		
NSGW40/13	25	40	65	80	360	112	140	50	14	100	100	70	210	160	14	14	267	24	50	27	8		
NSGW40/16	25	40	65	80	360	132	160	50	14	100	100	70	240	190	14	14	267	24	50	27	8		
NSGW40/20	25	40	65	100	360	160	180	50	14	110	100	70	265	212	14	14	267	24	50	27	8		
NSGW40/26	25	40	65	100	360	180	225	65	14	110	125	95	320	250	14	14	267	24	50	27	8		
NSGW50/13	25	50	65	100	360	132	160	50	14	100	100	70	240	190	14	14	267	24	50	27	8		
NSGW50/16	25	50	65	100	360	160	180	50	14	110	100	70	265	212	14	14	267	24	50	27	8		
NSGW50/20	25	50	65	100	360	160	200	50	14	110	100	70	265	212	14	14	267	24	50	27	8		

Model	Bearing inner diameter	Inlet		Outlet		a	f	h1	h2	b	c	n3	m1	m2	n1	n2	S1	S2	w	d	l	t	u
		DN2	DN1	DN2	DN1																		
NSGW 50/26	25	50	65	100	360	180	225	65	14	110	125	95	320	250	14	14	267	24	50	27	8		
NSGW 65/13	25	65	80	100	360	160	180	65	14	110	125	95	280	212	14	14	267	24	50	27	8		
NSGW 65/16	25	65	80	100	360	160	200	65	14	110	125	95	280	212	14	14	267	24	50	27	8		
NSGW 65/20	35	65	80	100	465	180	225	65	14	110	125	95	320	250	14	14	339	32	80	35	10		
NSGW 65/26	35	65	80	100	470	200	250	80	15	110	160	120	360	280	18	14	342	32	80	35	10		
NSGW 80/16	25	80	100	125	360	180	225	65	14	110	125	95	320	250	14	14	267	24	50	27	8		
NSGW 80/20	35	80	100	125	470	180	250	65	15	110	125	95	345	280	14	14	342	32	80	35	10		
NSGW 80/26	35	80	100	125	470	200	280	80	15	110	160	120	400	315	18	14	342	32	80	35	10		
NSGW100/16	35	100	125	125	470	200	250	80	15	110	160	120	360	280	18	14	342	32	80	35	10		
NSGW100/20	35	100	125	125	470	200	280	80	16	110	160	120	360	280	18	14	342	32	80	35	10		
NSGW100/26	35	100	125	140	470	225	280	80	16	110	160	120	400	315	18	14	342	32	80	35	10		
NSGW100/32	35	100	125	140	470	250	315	80	16	110	160	120	400	315	18	14	342	32	80	35	10		
NSGW100/40	45	100	125	140	530	280	355	100	20	110	200	150	500	400	23	14	370	42	110	45	12		
NSGW125/20	35	125	150	140	470	250	315	80	16	110	160	120	400	315	18	14	342	32	80	35	10		
NSGW125/26	35	125	150	140	470	250	355	80	16	110	160	120	400	315	18	14	342	32	80	35	10		
NSGW125/32	45	125	150	140	470	280	355	100	18	110	200	150	500	400	23	14	370	42	110	45	12		
NSGW125/40	45	125	150	160	530	315	400	100	18	110	200	150	500	400	23	14	370	42	110	45	12		
NSGW125/50	55	125	150	160	670	355	450	100	25	110	200	150	550	450	23	14	500	48	110	51	14		
NSGW150/20	35	150	200	160	500	280	400	100	18	110	200	150	400	315	23	14	342	32	80	35	10		
NSGW150/26	45	150	200	160	530	250	355	100	18	110	200	150	450	350	23	14	370	42	110	45	12		
NSGW150/32	45	150	200	160	530	280	400	100	18	110	200	150	550	450	23	14	370	42	110	45	12		
NSGW150/40	45	150	200	160	530	315	450	100	18	110	200	150	550	450	23	14	370	42	110	45	12		
NSGW150/50	55	150	200	180	670	375	500	100	22	110	200	150	550	450	23	14	500	48	110	51	14		
NSGW200/26	45	200	250	180	555	315	450	100	20	110	200	150	550	450	28	14	392	42	110	45	12		
NSGW200/32	55	200	250	180	670	315	480	120	20	110	220	170	600	480	28	14	505	48	110	51	14		
NSGW200/40	55	200	250	180	670	335	480	120	20	110	250	170	600	480	28	14	505	48	110	51	14		
NSGW200/50	65	200	250	200	720	425	560	100	22	140	200	150	660	560	23	19	515	60	140	64	18		
NSGW250/32	55	250	300	220	691	355	520	150	26	110	250	200	660	510	28	14	525	48	110	51	14		
NSGW250/40	55	250	300	220	682	400	560	150	26	110	250	200	660	510	28	14	516	48	110	51	14		
NSGW250/50	65	250	300	250	720	450	670	120	32	140	240	190	750	650	23	19	515	60	140	64	18		
NSGW300/40	65	300	350	300	720	425	670	120	30	140	250	190	760	660	30	19	515	60	140	64	18		

NSGW Pumps

Outline Dimension Table Of NSGW Type
Standard End Suction Pump (Completed Pump Unit)



Model	Motor(B3)		Installation dimension of water pump(mm)														Total weight of the unit kg	
	Base No	Power (kW)	a	H	c	L4	H1	H2	L	L1	L2	L3	s	w	B1	B		∅d
NSGW32/13-4KW/2	112M-2	4	80	312	4	400	172	360	844	80	560	750	25	60	294	330	16	93
NSGW32/13-3KW/2	100L-2	3	80	312	4	385	172	342	829	80	560	750	25	60	244	280	16	91
NSGW32/13-2.2KW/2	90L-2	2.2	80	312	4	345	172	332	789	80	560	750	25	60	244	280	16	73
NSGW32/13-1.5KW/2	90S-2	1.5	80	312	4	320	172	332	764	80	560	750	25	60	244	280	16	69
NSGW32/13-1.1KW/2	802-2	1.1	80	312	4	295	172	312	739	80	560	750	25	60	244	280	16	65
NSGW32/13-0.75KW/2	801-2	0.75	80	312	4	295	172	312	739	80	560	750	25	60	244	280	16	64
NSGW32/13-0.55KW/2	801-4	0.55	80	312	4	295	172	312	739	80	560	750	25	60	244	280	16	64
NSGW32/16-7.5KW/2	132S2-2	7.5	80	365	4	470	205	418	914	70	630	800	25	73	317	350	18	135
NSGW32/16-5.5KW/2	132S1-2	5.5	80	365	4	470	205	418	914	70	630	800	25	73	317	350	18	131
NSGW32/16-4KW/2	112M-2	4	80	352	4	400	192	380	844	80	560	750	25	60	294	330	16	99
NSGW32/16-3KW/2	100L-2	3	80	352	4	385	192	362	829	80	560	750	25	60	294	330	16	100
NSGW32/16-2.2KW/2	90L-2	2.2	80	352	4	345	192	352	789	80	560	750	25	60	294	330	16	81
NSGW32/16-1.5KW/2	90S-2	1.5	80	352	4	320	192	352	764	80	560	750	25	60	294	330	16	77
NSGW32/16-1.5KW/4	90L-4	1.5	80	352	4	345	192	352	789	80	560	750	25	60	294	330	16	82
NSGW32/16-1.1KW/4	90S-4	1.1	80	352	4	320	192	352	764	80	560	750	25	60	294	330	16	78
NSGW32/16-0.75KW/4	802-4	0.75	80	352	4	295	192	332	739	80	560	750	25	60	294	330	16	73
NSGW32/16-0.55KW/4	801-4	0.55	80	352	4	295	192	332	739	80	560	750	25	60	294	330	16	72
NSGW32/20-15KW/2	160M2-2	15	80	413	4	605	233	473	1049	70	780	1000	12.5	73	387	420	18	195
NSGW32/20-11KW/2	160M1-2	11	80	413	4	605	233	473	1049	70	780	1000	12.5	73	387	420	18	194
NSGW32/20-7.5KW/2	132S2-2	7.5	80	413	4	470	233	446	914	70	630	800	12.5	73	317	350	18	148
NSGW32/20-5.5KW/2	132S1-2	5.5	80	413	4	470	233	446	914	70	630	800	12.5	73	317	350	18	144
NSGW32/20-4KW/2	112M-2	4	80	400	4	400	220	408	844	80	560	750	12.5	60	294	330	16	112
NSGW32/20-2.2KW/4	100L1-4	2.2	80	400	4	385	220	390	829	80	560	750	12.5	60	294	330	16	103
NSGW32/20-1.5KW/4	90L-4	1.5	80	400	4	345	220	380	789	80	560	750	12.5	60	294	330	16	95
NSGW32/20-1.1KW/4	90S-4	1.1	80	400	4	320	220	380	764	80	560	750	12.5	60	294	330	16	91
NSGW32/20-0.75KW/4	802-4	0.75	80	400	4	295	220	360	739	80	560	750	12.5	60	294	330	16	86
NSGW32/20-0.55KW/4	801-4	0.55	80	400	4	295	220	360	739	80	560	750	12.5	60	294	330	16	85
NSGW32/26-30KW/2	200L1-2	30	100	515	4	765	290	590	1229	85	750	1100	32.5	90	417	460	18	340
NSGW32/26-22KW/2	180M-2	22	100	478	4	690	253	513	1154	70	780	1000	32.5	73	387	420	18	259
NSGW32/26-18.5KW/2	160L-2	18.5	100	478	4	660	253	493	1124	70	780	1000	32.5	73	387	420	18	229
NSGW32/26-15KW/2	160M2-2	15	100	478	4	605	253	493	1069	70	780	1000	32.5	73	387	420	18	206

Model	Motor(B3)		Installation dimension of water pump(mm)														Total weight of the unit kg	
	Base No	Power (kW)	a	H	c	L4	H1	H2	L	L1	L2	L3	s	w	B1	B		∅d
NSGW32/26-11KW/2	160M1-2	11	100	478	4	605	253	493	1069	70	780	1000	32.5	73	387	420	18	205
NSGW32/26-4KW/4	112M-4	4	100	478	4	400	253	441	864	70	630	800	32.5	73	387	420	18	133
NSGW32/26-3KW/4	100L2-4	3	100	478	4	385	253	423	849	70	630	800	32.5	73	387	420	18	123
NSGW32/26-2.2KW/4	100L1-4	2.2	100	478	4	385	253	423	849	70	630	800	32.5	73	387	420	18	120
NSGW32/26-1.5KW/4	90L-4	1.5	100	478	4	345	253	413	809	70	630	800	32.5	73	387	420	18	112
NSGW40/13-7.5KW/2	132S2-2	7.5	80	345	4	470	205	418	914	70	630	800	25	73	317	350	18	132
NSGW40/13-5.5KW/2	132S1-2	5.5	80	345	4	470	205	418	914	70	630	800	25	73	317	350	18	128
NSGW40/13-4KW/2	112M-2	4	80	312	4	400	172	360	844	80	560	750	25	60	294	330	16	95
NSGW40/13-3KW/2	100L-2	3	80	312	4	385	172	342	829	80	560	750	25	60	244	280	16	93
NSGW40/13-2.2KW/2	90L-2	2.2	80	312	4	345	172	332	789	80	560	750	25	60	244	280	16	75
NSGW40/13-1.5KW/2	90S-2	1.5	80	312	4	320	172	332	764	80	560	750	25	60	244	280	16	71
NSGW40/13-1.1KW/4	90S-4	1.1	80	312	4	320	172	332	764	80	560	750	25	60	244	280	16	72
NSGW40/13-0.75KW/4	802-4	0.75	80	312	4	295	172	312	739	80	560	750	25	60	244	280	16	67
NSGW40/13-0.55KW/4	801-4	0.55	80	312	4	295	172	312	739	80	560	750	25	60	244	280	16	66
NSGW40/16-11KW/2	160M1-2	11	80	393	4	605	233	473	1049	70	780	1000	25	73	387	420	18	182
NSGW40/16-7.5KW/2	132S2-2	7.5	80	365	4	470	205	418	914	70	630	800	25	73	317	350	18	134
NSGW40/16-5.5KW/2	132S1-2	5.5	80	365	4	470	205	418	914	70	630	800	25	73	317	350	18	130
NSGW40/16-4KW/2	112M-2	4	80	352	4	400	192	380	844	80	560	750	25	60	294	330	16	98
NSGW40/16-3KW/2	100L-2	3	80	352	4	385	192	362	829	80	560	750	25	60	294	330	16	99
NSGW40/16-1.5KW/4	90L-4	1.5	80	352	4	345	192	352	789	80	560	750	25	60	294	330	16	81
NSGW40/16-1.1KW/4	90S-4	1.1	80	352	4	320	192	352	764	80	560	750	25	60	294	330	16	77
NSGW40/16-0.75KW/4	802-4	0.75	80	352	4	295	192	332	739	80	560	750	25	60	294	330	16	72
NSGW40/16-0.55KW/4	801-4	0.55	80	352	4	295	192	332	739	80	560	750	25	60	294	330	16	71
NSGW40/20-18.5KW/2	160L-2	18.5	100	413	4	660	233	473	1124	70	780	1000	32.5	73	387	420	18	216
NSGW40/20-15KW/2	160M2-2	15	100	413	4	605	233	473	1069	70	780	1000	32.5	73	387	420	18	192
NSGW40/20-11KW/2	160M1-2	11	100	413	4	605	233	473	1069	70	780	1000	32.5	73	387	420	18	191
NSGW40/20-7.5KW/2	132S2-2	7.5	100	413	4	470	233	446	934	70	630	800	32.5	73	317	350	18	146
NSGW40/20-5.5KW/2	132S1-2	5.5	100	413	4	470	233	446	934	70	630	800	32.5	73	317	350	18	142
NSGW40/20-3KW/4	100L2-4	3	100	400	4	385	220	390	849	80	560	750	32.5	60	294	330	16	104
NSGW40/20-2.2KW/4	100L1-4	2.2	100	400	4	385	220	390	849	80	560	750	32.5	60	294	330	16	101
NSGW40/20-1.5KW/4	90L-4	1.5	100	400	4	345	220	380	809	80	560	750	32.5	60	294	330	16	93
NSGW40/20-1.1KW/4	90S-4	1.1	100	400	4	320	220	380	784	80	560	750	32.5	60	294	330	16	89
NSGW40/20-0.75KW/4	802-4	0.75	100	400	4	295	220	360	759	80	560	750	32.5	60	294	330	16	84
NSGW40/26-37KW/2	200L2-2	37	100	515	4	765	290	590	1229	85	750	1100	34.5	90	417	460	18	353
NSGW40/26-30KW/2	200L1-2	30	100	515	4	765	290	590	1229	85	750	1100	34.5	90	417	460	18	343
NSGW40/26-22KW/2	180M-2	22	100	478	4	690	253	513	1154	70	780	1000	34.5	73	387	420	18	262
NSGW40/26-18.5KW/2	160L-2	18.5	100	478	4	660	253	493	1124	70	780	1000	34.5	73	387	420	18	232
NSGW40/26-15KW/2	160M2-2	15	100	478	4	605	253	493	1069	70	780	1000	34.5	73	387	420	18	209
NSGW40/26-11KW/2	160M1-2	11	100	478	4	605	253	493	1069	70	780	1000	34.5	73	387	420	18	208
NSGW40/26-5.5KW/4	132S-4	5.5	100	478	4	470	253	466	934	70	680	900	34.5	73	387	420	18	162
NSGW40/26-4KW/4	1																	

NSGW Pumps

Outline Dimension Table Of NSGW Type Standard End Suction Pump (Completed Pump Unit)

Model	Motor(B3)		Installation dimension of water pump(mm)															Total weight of the unit kg
	Base No	Power (kW)	a	H	c	L4	H1	H2	L	L1	L2	L3	s	w	B1	B	φd	
NSGW40/32G-45KW/2	225M-2	45	125	565	4	805	315	640	1460	70	940	1300	57.5	90	457	500	18	459
NSGW40/32G-37KW/2	200L2-2	37	125	540	4	765	290	590	1420	70	940	1300	57.5	90	417	460	18	399
NSGW40/32G-30KW/2	200L1-2	30	125	540	4	765	290	590	1420	70	940	1300	57.5	90	417	460	18	389
NSGW40/32G-22KW/2	180M-2	22	125	523	4	690	273	533	1345	80	950	1150	57.5	73	387	420	18	309
NSGW40/32H-45KW/2	225M-2	45	125	565	4	805	315	640	1404	70	900	1200	57.5	90	457	500	18	446
NSGW40/32H-37KW/2	200L2-2	37	125	540	4	765	290	590	1364	70	850	1200	57.5	90	417	460	18	386
NSGW40/32H-30KW/2	200L1-2	30	125	540	4	765	290	590	1364	70	850	1200	57.5	90	417	460	18	376
NSGW40/32H-22KW/2	180M-2	22	125	523	4	690	273	533	1289	80	890	1100	57.5	73	387	420	18	297
NSGW40/32-11KW/4	160M-4	11	125	523	4	605	273	513	1204	80	890	1100	57.5	73	387	420	18	243
NSGW40/32-7.5KW/4	132M-4	7.5	125	523	4	510	273	486	1109	80	800	1000	57.5	73	387	420	18	210
NSGW40/32-5.5KW/4	132S-4	5.5	125	523	4	470	273	486	1069	80	800	1000	57.5	73	387	420	18	197
NSGW40/32-4KW/4	112M-4	4	125	523	4	400	273	461	999	70	700	900	57.5	73	387	420	18	177
NSGW40/32-3KW/4	100L2-4	3	125	523	4	385	273	443	984	80	690	900	57.5	73	387	420	18	167
NSGW50/13-11KW/2	160M1-2	11	100	393	4	605	233	473	1069	70	780	1000	45	73	387	420	18	183
NSGW50/13-7.5KW/2	132S2-2	7.5	100	365	4	470	205	418	934	70	630	800	45	73	317	350	18	135
NSGW50/13-5.5KW/2	132S1-2	5.5	100	365	4	470	205	418	934	70	630	800	45	73	317	350	18	131
NSGW50/13-4KW/2	112M-2	4	100	352	4	400	192	380	864	80	560	750	45	60	294	330	16	99
NSGW50/13-3KW/2	100L-2	3	100	352	4	385	192	362	849	80	560	750	45	60	294	330	16	100
NSGW50/13-2.2KW/4	100L1-4	2.2	100	352	4	385	192	362	849	80	560	750	45	60	294	330	16	90
NSGW50/13-1.5KW/4	90L-4	1.5	100	352	4	345	192	352	809	80	560	750	45	60	294	330	16	82
NSGW50/13-1.1KW/4	90S-4	1.1	100	352	4	320	192	352	784	80	560	750	45	60	294	330	16	78
NSGW50/13-0.75KW/4	802-4	0.75	100	352	4	295	192	332	759	80	560	750	45	60	294	330	16	73
NSGW50/13-0.55KW/4	801-4	0.55	100	352	4	295	192	332	759	80	560	750	45	60	294	330	16	72
NSGW50/16-22KW/2	180M-2	22	100	433	4	690	253	513	1154	70	780	1000	32.5	73	387	420	18	241
NSGW50/16-18.5KW/2	160L-2	18.5	100	413	4	660	233	473	1124	70	780	1000	32.5	73	387	420	18	210
NSGW50/16-15KW/2	160M2-2	15	100	413	4	605	233	473	1069	70	780	1000	32.5	73	387	420	18	186
NSGW50/16-11KW/2	160M1-2	11	100	413	4	605	233	473	1069	70	780	1000	32.5	73	387	420	18	185
NSGW50/16-7.5KW/2	132S2-2	7.5	100	413	4	470	233	446	934	70	630	800	32.5	73	317	350	18	140
NSGW50/16-5.5KW/2	132S1-2	5.5	100	413	4	470	233	446	934	70	630	800	32.5	73	317	350	18	136
NSGW50/16-4KW/2	112M-2	4	100	400	4	400	220	408	864	80	560	750	32.5	60	294	330	16	104
NSGW50/16-3KW/4	100L2-4	3	100	400	4	385	220	390	849	80	560	750	32.5	60	294	330	16	98
NSGW50/16-2.2KW/4	100L1-4	2.2	100	400	4	385	220	390	849	80	560	750	32.5	60	294	330	16	95
NSGW50/16-1.5KW/4	90L-4	1.5	100	400	4	345	220	380	809	80	560	750	32.5	60	294	330	16	87
NSGW50/16-1.1KW/4	90S-4	1.1	100	400	4	320	220	380	784	80	560	750	32.5	60	294	330	16	83
NSGW50/16-0.75KW/4	802-4	0.75	100	400	4	295	220	360	759	80	560	750	32.5	60	294	330	16	78
NSGW50/16-0.55KW/4	801-4	0.55	100	400	4	295	220	360	759	80	560	750	32.5	60	294	330	16	77
NSGW50/20-30KW/2	200L1-2	30	100	490	4	765	290	590	1229	85	750	1100	35.5	90	417	460	18	333
NSGW50/20-22KW/2	180M-2	22	100	453	4	690	253	513	1154	70	780	1000	35.5	73	387	420	18	251
NSGW50/20-18.5KW/2	160L-2	18.5	100	433	4	660	233	473	1124	70	780	1000	35.5	73	387	420	18	220
NSGW50/20-15KW/2	160M2-2	15	100	433	4	605	233	473	1069	70	780	1000	35.5	73	387	420	18	196
NSGW50/20-11KW/2	160M1-2	11	100	433	4	605	233	473	1069	70	780	1000	35.5	73	387	420	18	195
NSGW50/20-7.5KW/2	132S2-2	7.5	100	433	4	470	233	446	934	70	630	800	35.5	73	317	350	18	150
NSGW50/20-4KW/4	112M-4	4	100	420	4	400	220	408	864	80	560	750	35.5	60	294	330	16	118
NSGW50/20-3KW/4	100L2-4	3	100	420	4	385	220	390	849	80	560	750	35.5	60	294	330	16	108

Model	Motor(B3)		Installation dimension of water pump(mm)															Total weight of the unit kg
	Base No	Power (kW)	a	H	c	L4	H1	H2	L	L1	L2	L3	s	w	B1	B	φd	
NSGW50/20-2.2KW/4	100L1-4	2.2	100	420	4	385	220	390	849	80	560	750	35.5	60	294	330	16	105
NSGW50/20-1.5KW/4	90L-4	1.5	100	420	4	345	220	380	809	80	560	750	35.5	60	294	330	16	97
NSGW50/20-1.1KW/4	90S-4	1.1	100	420	4	320	220	380	784	80	560	750	35.5	60	294	330	16	93
NSGW50/26G-37KW/2	200L2-2	37	100	515	4	765	290	590	1339	85	830	1200	35.5	90	417	460	18	357
NSGW50/26G-30KW/2	200L1-2	30	100	515	4	765	290	590	1339	85	830	1200	35.5	90	417	460	18	347
NSGW50/26G-22KW/2	180M-2	22	100	478	4	690	253	513	1264	80	890	1100	35.5	73	387	420	18	268
NSGW50/26-37KW/2	200L2-2	37	100	515	4	765	290	590	1229	85	750	1100	35.5	90	417	460	18	360
NSGW50/26-30KW/2	200L1-2	30	100	515	4	765	290	590	1229	85	750	1100	35.5	90	417	460	18	350
NSGW50/26-22KW/2	180M-2	22	100	478	4	690	253	513	1154	70	780	1000	35.5	73	387	420	18	269
NSGW50/26-18.5KW/2	160L-2	18.5	100	478	4	660	253	493	1124	70	780	1000	35.5	73	387	420	18	239
NSGW50/26-11KW/4	160M-4	11	100	478	4	605	253	493	1069	70	780	1000	35.5	73	387	420	18	215
NSGW50/26-7.5KW/4	132M-4	7.5	100	478	4	510	253	466	974	70	680	900	35.5	73	387	420	18	183
NSGW50/26-5.5KW/4	132S-4	5.5	100	478	4	470	253	466	934	70	680	900	35.5	73	387	420	18	169
NSGW50/26-4KW/4	112M-4	4	100	478	4	400	253	441	864	70	630	800	35.5	73	387	420	18	143
NSGW50/26-3KW/4	100L2-4	3	100	478	4	385	253	423	849	70	630	800	35.5	73	387	420	18	138
NSGW50/32G-75KW/2	280S-2	75	125	655	6	980	375	755	1637	100	1070	1450	57.5	95	557	600	18	689
NSGW50/32G-55KW/2	250M-2	55	125	620	4	910	340	705	1565	110	960	1450	57.5	90	507	550	18	570
NSGW50/32G-45KW/2	225M-2	45	125	595	4	805	315	640	1460	110	900	1300	57.5	90	457	500	18	457
NSGW50/32G-37KW/2	200L2-2	37	125	595	4	765	315	615	1420	85	880	1200	57.5	90	417	460	18	398
NSGW50/32G-30KW/2	200L1-2	30	125	595	4	765	315	615	1420	85	880	1200	57.5	90	417	460	18	388
NSGW50/32H-75KW/2	280S-2	75	125	655	6	980	375	755	1581	100	1070	1450	57.5	95	557	600	18	684
NSGW50/32H-55KW/2	250M-2	55	125	620	4	910	340	705	1509	110	950	1300	57.5	90	507	550	18	562
NSGW50/32H-45KW/2	225M-2	45	125	595	4	805	315	640	1404	85	860	1200	57.5	90	457	500	18	450
NSGW50/32H-37KW/2	200L2-2	37	125	595	4	765	315	615	1364	85	830	1200	57.5	90	417	460	18	393
NSGW50/32H-30KW/2	200L1-2	30	125	595	4	765	315	615	1364	85	830	1200	57.5	90	417	460	18	383
NSGW50/32-18.5KW/4	180M-4	18.5	125	578	4	690	298	558	1289	80	890	1100	57.5	73	387	420	18	306
NSGW50/32-15KW/4	160L-4	15	125															

NSGW Pumps

Outline Dimension Table Of NSGW Type Standard End Suction Pump (Completed Pump Unit)

Model	Motor(B3)		Installation dimension of water pump(mm)															Total weight of the unit kg
	Base No	Power (kW)	a	H	c	L4	H1	H2	L	L1	L2	L3	s	w	B1	B	φd	
NSGW65/16-5.5KW/2	132S1-2	5.5	100	433	4	470	233	446	934	70	630	800	20	73	317	350	18	144
NSGW65/16-4KW/4	112M-4	4	100	420	4	400	220	408	864	80	560	750	32.5	60	294	330	16	116
NSGW65/16-3KW/4	100L2-4	3	100	420	4	385	220	390	849	80	560	750	32.5	60	294	330	16	105
NSGW65/16-2.2KW/4	100L1-4	2.2	100	420	4	385	220	390	849	80	560	750	32.5	60	294	330	16	102
NSGW65/16-1.5KW/4	90L-4	1.5	100	420	4	345	220	380	809	80	560	750	32.5	60	294	330	16	95
NSGW65/16-1.1KW/4	90S-4	1.1	100	420	4	320	220	380	784	80	560	750	32.5	60	294	330	16	91
NSGW65/20G-37KW/2	200L2-2	37	100	515	4	765	290	590	1334	85	830	1200	37.5	90	417	460	18	354
NSGW65/20G-30KW/2	200L1-2	30	100	515	4	765	290	590	1334	85	830	1200	37.5	90	417	460	18	343
NSGW65/20-37KW/2	200L2-2	37	100	515	4	765	290	590	1229	85	750	1100	37.5	90	417	460	18	347
NSGW65/20-30KW/2	200L1-2	30	100	515	4	765	290	590	1229	85	750	1100	37.5	90	417	460	18	337
NSGW65/20-22KW/2	180M-2	22	100	478	4	690	253	513	1154	70	780	1000	37.5	73	387	420	18	256
NSGW65/20-18.5KW/2	160L-2	18.5	100	478	4	660	253	493	1124	70	780	1000	37.5	73	387	420	18	226
NSGW65/20-15KW/2	160M2-2	15	100	478	4	605	253	493	1069	70	780	1000	37.5	73	387	420	18	203
NSGW65/20-7.5KW/4	132M-4	7.5	100	478	4	510	253	466	974	70	680	900	37.5	73	387	420	18	170
NSGW65/20-5.5KW/4	132S-4	5.5	100	478	4	470	253	466	934	70	680	900	37.5	73	387	420	18	156
NSGW65/20-4KW/4	112M-4	4	100	478	4	400	253	441	864	70	630	800	37.5	73	387	420	18	130
NSGW65/20-3KW/4	100L2-4	3	100	478	4	385	253	423	849	70	630	800	37.5	73	387	420	18	120
NSGW65/20-2.2KW/4	100L1-4	2.2	100	478	4	385	253	423	849	70	630	800	37.5	73	387	420	18	117
NSGW65/26-90KW/2	280M-2	90	100	625	6	1030	375	755	1606	100	1070	1450	15	95	557	600	18	731
NSGW65/26-75KW/2	280S-2	75	100	625	6	980	375	755	1556	100	1070	1450	15	95	557	600	18	675
NSGW65/26-55KW/2	250M-2	55	100	590	4	910	340	705	1484	110	950	1300	15	90	507	550	18	554
NSGW65/26-45KW/2	225M-2	45	100	565	4	805	315	640	1379	85	890	1200	15	90	457	500	18	441
NSGW65/26-37KW/2	200L2-2	37	100	540	4	765	290	590	1339	85	830	1200	15	90	417	460	18	380
NSGW65/26-30KW/2	200L1-2	30	100	540	4	765	290	590	1339	85	830	1200	15	90	417	460	18	370
NSGW65/26-15KW/4	160L-4	15	100	523	4	660	273	513	1234	80	890	1100	15	73	387	420	18	257
NSGW65/26-11KW/4	160M-4	11	100	523	4	605	273	513	1179	80	890	1100	15	73	387	420	18	237
NSGW65/26-7.5KW/4	132M-4	7.5	100	523	4	510	273	486	1084	80	800	1000	15	73	387	420	18	204
NSGW65/26-5.5KW/4	132S-4	5.5	100	523	4	470	273	486	1044	80	800	1000	15	73	387	420	18	191
NSGW65/26-4KW/4	112M-4	4	100	523	4	400	273	461	974	80	690	900	15	73	387	420	18	170
NSGW65/32G-90KW/2	280M-2	90	125	655	6	1030	375	755	1686	100	1070	1450	40	95	557	600	18	762
NSGW65/32G-75KW/2	280S-2	75	125	655	6	980	375	755	1636	100	1070	1450	40	95	557	600	18	706
NSGW65/32G-55KW/2	250M-2	55	125	620	4	910	340	705	1564	110	1010	1450	40	90	507	550	18	586
NSGW65/32G-45KW/2	225M-2	45	125	595	4	805	315	640	1459	110	900	1300	40	90	457	500	18	473
NSGW65/32H-90KW/2	280M-2	90	125	655	6	1030	375	755	1631	100	1070	1450	40	95	557	600	18	752
NSGW65/32H-75KW/2	280S-2	75	125	655	6	980	375	755	1581	100	1070	1450	40	95	557	600	18	696
NSGW65/32H-55KW/2	250M-2	55	125	620	4	910	340	705	1509	110	950	1300	40	90	507	550	18	573
NSGW65/32H-45KW/2	225M-2	45	125	595	4	805	315	640	1404	85	880	1200	40	90	457	500	18	462
NSGW65/32-22KW/4	180L-4	22	125	595	4	725	315	575	1324	85	830	1200	40	90	417	460	18	348
NSGW65/32-18.5KW/4	180M-4	18.5	125	595	4	690	315	575	1289	85	830	1200	40	90	417	460	18	326
NSGW65/32-15KW/4	160L-4	15	125	595	4	660	315	555	1259	85	900	1100	40	90	417	460	18	288
NSGW65/32-11KW/4	160M-4	11	125	595	4	605	315	555	1204	85	900	1100	40	90	417	460	18	267
NSGW65/32-7.5KW/4	132M-4	7.5	125	595	4	510	315	528	1109	85	800	1000	40	90	417	460	18	235
NSGW65/32-5.5KW/4	132S-4	5.5	125	595	4	470	315	528	1069	85	800	1000	40	90	417	460	18	222
NSGW80/16-45KW/2	225M-2	45	125	540	4	805	315	640	1294	85	750	1100	57.5	90	457	500	18	339

Model	Motor(B3)		Installation dimension of water pump(mm)															Total weight of the unit kg
	Base No	Power (kW)	a	H	c	L4	H1	H2	L	L1	L2	L3	s	w	B1	B	φd	
NSGW80/16-37KW/2	200L2-2	37	125	515	4	765	290	590	1254	85	750	1100	57.5	90	417	460	18	345
NSGW80/16-30KW/2	200L1-2	30	125	515	4	765	290	590	1254	85	750	1100	57.5	90	417	460	18	335
NSGW80/16-22KW/2	180M-2	22	125	478	4	690	253	513	1179	70	780	1000	57.5	73	387	420	18	254
NSGW80/16-18.5KW/2	160L-2	18.5	125	478	4	660	253	493	1149	70	780	1000	57.5	73	387	420	18	224
NSGW80/16-15KW/2	160M2-2	15	125	478	4	605	253	493	1094	70	780	1000	57.5	73	387	420	18	201
NSGW80/16-11KW/2	160M1-2	11	125	478	4	605	253	493	1094	70	780	1000	57.5	73	387	420	18	200
NSGW80/16-5.5KW/4	132S-4	5.5	125	478	4	470	253	466	959	70	680	900	57.5	73	387	420	18	154
NSGW80/16-4KW/4	112M-4	4	125	478	4	400	253	441	889	70	630	800	57.5	73	387	420	18	128
NSGW80/16-3KW/4	100L2-4	3	125	478	4	385	253	423	874	70	630	800	57.5	73	387	420	18	118
NSGW80/16-2.2KW/4	100L1-4	2.2	125	478	4	385	253	423	874	70	630	800	57.5	73	387	420	18	115
NSGW80/16-1.5KW/4	90L-4	1.5	125	478	4	345	253	413	834	70	630	800	57.5	73	387	420	18	107
NSGW80/20-75KW/2	280S-2	75	125	625	6	980	375	755	1581	100	1070	1450	57.5	95	557	600	18	661
NSGW80/20-55KW/2	250M-2	55	125	590	4	910	340	705	1509	110	950	1300	57.5	90	507	550	18	542
NSGW80/20-45KW/2	225M-2	45	125	565	4	805	315	640	1404	85	860	1200	57.5	90	457	500	18	431
NSGW80/20-37KW/2	200L2-2	37	125	540	4	765	290	590	1364	85	830	1200	57.5	90	417	460	18	368
NSGW80/20-30KW/2	200L1-2	30	125	540	4	765	290	590	1364	85	830	1200	57.5	90	417	460	18	358
NSGW80/20-22KW/2	180M-2	22	125	503	4	690	253	513	1289	80	890	1100	57.5	73	387	420	18	279
NSGW80/20-11KW/4	160M-4	11	125	503	4	605	253	493	1204	80	890	1100	57.5	73	387	420	18	224
NSGW80/20-7.5KW/4	132M-4	7.5	125	503	4	510	253	466	1109	80	800	1000	57.5	73	387	420	18	192
NSGW80/20-5.5KW/4	132S-4	5.5	125	503	4	470	253	466	1069	80	800	1000	57.5	73	387	420	18	179
NSGW80/20-4KW/4	112M-4	4	125	503	4	400	253	441	999	80	690	900	57.5	73	387	420	18	158
NSGW80/20-3KW/4	100L2-4	3	125	503	4	385	253	423	984	80	690	900	57.5	73	387	420	18	148
NSGW80/26-132KW/2	315M-2	132	125	710	6	1290	430	945	1891	110	1050	1500	40	115	657	700	18	1175
NSGW80/26-110KW/2	315S-2	110	125	710	6	1180	430	940	1781	110	1050	1500	40	115	657	700	18	1094
NSGW80/26-90KW/2	280M-2	90	125	655	6	1030	375	755	1631	100	1070	1450	40	95	557	600	18	738
NSGW80/26-75KW/2	280S-2	75	125	655	6	980	375	755	1581	100	1070	1450	40	95	557	600	18	682
NSGW80/26-55KW/2	250M-2	55	125	620														

NSGW Pumps

Outline Dimension Table Of NSGW Type Standard End Suction Pump (Completed Pump Unit)

Model	Motor(B3)		Installation dimension of water pump(mm)															Total weight of the unit kg
	Base No	Power (kW)	a	H	c	L4	H1	H2	L	L1	L2	L3	s	w	B1	B	φd	
NSGW80/32-30KW/4	200L-4	30	125	655	4	765	340	640	1364	85	850	1200	42.5	90	417	460	18	414
NSGW80/32-22KW/4	180L-4	22	125	655	4	725	340	600	1324	85	830	1200	42.5	90	417	460	18	353
NSGW80/32-18.5KW/4	180M-4	18.5	125	655	4	690	340	600	1289	85	830	1200	42.5	90	417	460	18	331
NSGW80/32-15KW/4	160L-4	15	125	655	4	660	340	580	1259	85	900	1100	42.5	90	417	460	18	293
NSGW80/32-11KW/4	160M-4	11	125	655	4	605	340	580	1204	85	900	1100	42.5	90	417	460	18	272
NSGW80/32-7.5KW/4	132M-4	7.5	125	655	4	510	340	553	1109	85	800	1000	42.5	90	417	460	18	240
NSGW80/40-55KW/4	250M-4	55	125	725	4	910	370	735	1569	110	1010	1450	40	90	507	550	18	635
NSGW80/40-45KW/4	225M-4	45	125	725	4	835	370	695	1494	110	950	1300	40	90	457	500	18	557
NSGW80/40-37KW/4	225S-4	37	125	725	4	810	370	700	1469	110	950	1300	40	90	457	500	18	546
NSGW80/40-30KW/4	200L-4	30	125	725	4	765	370	670	1424	110	900	1300	40	90	457	500	18	464
NSGW80/40-22KW/4	180L-4	22	125	725	4	725	370	630	1384	85	870	1200	40	90	457	500	18	401
NSGW80/40-18.5KW/4	180M-4	18.5	125	725	4	690	370	630	1349	85	870	1200	40	90	457	500	18	380
NSGW80/40-15KW/4	160L-4	15	125	725	4	660	370	610	1319	85	860	1200	40	90	457	500	18	351
NSGW100/16-45KW/2	225M-2	45	125	565	4	805	315	640	1404	85	890	1200	49	90	457	500	18	441
NSGW100/16-37KW/2	200L2-2	37	125	540	4	765	290	590	1364	85	830	1200	49	90	417	460	18	380
NSGW100/16-30KW/2	200L1-2	30	125	540	4	765	290	590	1364	85	830	1200	49	90	417	460	18	370
NSGW100/16-22KW/2	180M-2	22	125	523	4	690	273	533	1289	80	890	1100	49	73	387	420	18	291
NSGW100/16-18.5KW/2	160L-2	18.5	125	523	4	660	273	513	1259	80	890	1100	49	73	387	420	18	261
NSGW100/16-15KW/2	160M2-2	15	125	523	4	605	273	513	1204	80	890	1100	49	73	387	420	18	238
NSGW100/16-7.5KW/4	132M-4	7.5	125	523	4	510	273	486	1109	80	800	1000	49	73	387	420	18	204
NSGW100/16-5.5KW/4	132S-4	5.5	125	523	4	470	273	486	1069	80	800	1000	49	73	387	420	18	191
NSGW100/16-4KW/4	112M-4	4	125	523	4	400	273	461	999	80	690	900	49	73	387	420	18	170
NSGW100/16-3KW/4	100L2-4	3	125	523	4	385	273	443	984	80	690	900	49	73	387	420	18	160
NSGW100/16-2.2KW/4	100L1-4	2.2	125	523	4	385	273	443	984	80	690	900	49	73	387	420	18	157
NSGW100/20-110KW/2	315S-2	110	125	710	6	1180	430	940	1781	110	1050	1500	40	115	657	700	18	1084
NSGW100/20-90KW/2	280M-2	90	125	655	6	1030	375	755	1631	100	1070	1450	40	95	557	600	18	728
NSGW100/20-75KW/2	280S-2	75	125	655	6	980	375	755	1581	100	1070	1450	40	95	557	600	18	672
NSGW100/20-55KW/2	250M-2	55	125	620	4	910	340	705	1509	110	950	1300	40	90	507	550	18	551
NSGW100/20-45KW/2	225M-2	45	125	595	4	805	315	640	1404	85	890	1200	40	90	457	500	18	438
NSGW100/20-37KW/2	200L2-2	37	125	570	4	765	290	590	1364	85	830	1200	40	90	417	460	18	377
NSGW100/20-30KW/2	200L1-2	30	125	570	4	765	290	590	1364	85	830	1200	40	90	417	460	18	367
NSGW100/20-15KW/4	160L-4	15	125	553	4	660	273	513	1259	80	890	1100	40	73	387	420	18	254
NSGW100/20-11KW/4	160M-4	11	125	553	4	605	273	513	1204	80	890	1100	40	73	387	420	18	234
NSGW100/20-7.5KW/4	132M-4	7.5	125	553	4	510	273	486	1109	80	800	1000	40	73	387	420	18	201
NSGW100/20-5.5KW/4	132S-4	5.5	125	553	4	470	273	486	1069	80	800	1000	40	73	387	420	18	188
NSGW100/20-4KW/4	112M-4	4	125	553	4	400	273	461	999	80	690	900	40	73	387	420	18	167
NSGW100/20-3KW/4	100L2-4	4	125	553	4	385	273	443	984	80	690	900	40	73	387	420	18	157
NSGW100/26-132KW/2	315M-2	132	140	710	6	1290	430	945	1906	110	1050	1500	55	115	657	700	18	1181
NSGW100/26H-110KW/2	315S-2	110	140	710	6	1180	430	940	1796	110	1050	1500	55	115	657	700	18	1100
NSGW100/26H-90KW/2	280M-2	90	140	655	6	1030	375	755	1646	100	1070	1450	55	95	557	600	18	744
NSGW100/26H-75KW/2	280S-2	75	140	655	6	980	375	755	1596	100	1070	1450	55	95	557	600	18	688
NSGW100/26H-55KW/2	250M-2	55	140	620	4	910	340	705	1524	110	950	1300	55	90	507	550	18	565
NSGW100/26-30KW/4	200L-4	30	140	595	4	765	315	615	1379	85	870	1200	55	90	417	460	18	401
NSGW100/26-22KW/4	180L-4	22	140	595	4	725	315	575	1339	85	830	1200	55	90	417	460	18	340

Model	Motor(B3)		Installation dimension of water pump(mm)															Total weight of the unit kg
	Base No	Power (kW)	a	H	c	L4	H1	H2	L	L1	L2	L3	s	w	B1	B	φd	
NSGW100/26-18.5KW/4	180M-4	18.5	140	595	4	690	315	575	1304	85	830	1200	55	90	417	460	18	318
NSGW100/26-15KW/4	160L-4	15	140	595	4	660	315	555	1274	85	900	1100	55	90	417	460	18	280
NSGW100/26-11KW/4	160M-4	11	140	595	4	605	315	555	1219	85	900	1100	55	90	417	460	18	259
NSGW100/26-7.5KW/4	132M-4	7.5	140	595	4	510	315	528	1124	85	800	1000	55	90	417	460	18	227
NSGW100/32-45KW/4	225M-4	45	140	655	4	835	340	665	1449	110	900	1300	57.5	90	457	500	18	514
NSGW100/32-37KW/4	225S-4	37	140	655	4	810	340	670	1424	110	900	1300	57.5	90	457	500	18	503
NSGW100/32-30KW/4	200L-4	30	140	655	4	765	340	640	1379	85	850	1200	57.5	90	417	460	18	418
NSGW100/32-22KW/4	180L-4	22	140	655	4	725	340	600	1339	85	830	1200	57.5	90	417	460	18	357
NSGW100/32-18.5KW/4	180M-4	18.5	140	655	4	690	340	600	1304	85	830	1200	57.5	90	417	460	18	335
NSGW100/32-15KW/4	160L-4	15	140	655	4	660	340	580	1274	85	900	1100	57.5	90	417	460	18	297
NSGW100/32-11KW/4	160M-4	11	140	655	4	605	340	580	1219	85	900	1100	57.5	90	417	460	18	276
NSGW100/40-75KW/4	280S-4	75	140	730	6	980	375	755	1656	100	1070	1450	35	95	557	600	18	827
NSGW100/40-55KW/4	250M-4	55	140	725	4	910	370	735	1584	110	1010	1450	35	90	507	550	18	650
NSGW100/40-45KW/4	225M-4	45	140	725	4	835	370	695	1509	110	950	1300	35	90	507	550	18	577
NSGW100/40-37KW/4	225S-4	37	140	725	4	810	370	700	1484	110	950	1300	35	90	507	550	18	565
NSGW100/40-30KW/4	200L-4	30	140	725	4	765	370	670	1439	110	900	1300	35	90	507	550	18	483
NSGW100/40-22KW/4	180L-4	22	140	725	4	725	370	630	1399	110	900	1300	35	90	507	550	18	422
NSGW125/20-75KW/2	280S-2	75	140	690	6	980	375	755	1596	100	1070	1450	62.5	95	557	600	18	689
NSGW125/20-55KW/2	250M-2	55	140	655	4	910	340	705	1524	110	950	1300	62.5	90	507	550	18	575
NSGW125/20-45KW/2	225M-2	45	140	655	4	805	340	665	1419	110	860	1300	62.5	90	457	500	18	468
NSGW125/20-18.5KW/4	180M-4	18.5	140	655	4	690	340	600	1304	85	830	1200	62.5	90	417	460	18	329
NSGW125/20-15KW/4	160L-4	15	140	655	4	660	340	580	1274	85	900	1100	62.5	90	417	460	18	291
NSGW125/20-11KW/4	160M-4	11	140	655	4	605	340	580	1219	85	900	1100	62.5	90	417	460	18	270
NSGW125/20-7.5KW/4	132M-4	7.5	140	655	4	510	340	553	1124	85	800	1000	62.5	90	417	460	18	238
NSGW125/20-5.5KW/4	132S-4	5.5	140	655	4	470	340	553	1084	85	800	1000	62.5	90	417	460	18	225
NSGW125/26-37KW/4	225S-4	37	140	695	4	810	340	670	1424	110	900	1300	57.5	90	457	500	18	502

NSGW Pumps

Outline Dimension Table Of NSGW Type Standard End Suction Pump (Completed Pump Unit)

Model	Motor(B3)		Installation dimension of water pump(mm)															Total weight of the unit kg
	Base No	Power (kW)	a	H	c	L4	H1	H2	L	L1	L2	L3	s	w	B1	B	φd	
NSGW125/40-30KW/4	200L-4	30	180	805	4	765	405	705	1479	110	900	1300	55	90	507	550	18	486
NSGW125/50-160KW/4	315L1-4	160	180	920	6	1320	470	985	2176	110	1350	1850	55	115	657	700	18	1466
NSGW125/50-132KW/4	315M-4	132	180	920	6	1320	470	985	2176	110	1300	1750	55	115	657	700	18	1420
NSGW125/50-110KW/4	315S-4	110	180	920	6	1275	470	980	2131	110	1300	1750	55	115	657	700	18	1278
NSGW125/50-90KW/4	280M-4	90	180	920	6	1030	470	850	1886	110	1200	1650	55	115	657	700	18	1026
NSGW125/50-75KW/4	280S-4	75	180	920	6	980	470	850	1836	110	1200	1650	55	115	657	700	18	983
NSGW150/20-30KW/4	200L-4	30	180	770	4	765	370	670	1449	105	890	1300	55	90	417	460	18	434
NSGW150/20-22KW/4	180L-4	22	180	770	4	725	370	630	1409	105	840	1200	55	90	417	460	18	372
NSGW150/20-18.5KW/4	180M-4	18.5	180	770	4	690	370	630	1374	105	840	1200	55	90	417	460	18	350
NSGW150/20-15KW/4	160L-4	15	180	770	4	660	370	610	1344	105	820	1200	55	90	417	460	18	313
NSGW150/20-11KW/4	160M-4	11	180	770	4	605	370	610	1289	105	820	1200	55	90	417	460	18	293
NSGW150/26-55KW/4	250M-4	55	180	695	4	910	340	705	1624	110	1010	1450	55	90	507	550	18	637
NSGW150/26-45KW/4	225M-4	45	180	695	4	835	340	665	1549	110	950	1300	55	90	457	500	18	561
NSGW150/26-37KW/4	225S-4	37	180	695	4	810	340	670	1524	110	950	1300	55	90	457	500	18	549
NSGW150/26-30KW/4	200L-4	30	180	695	4	765	340	640	1479	110	900	1300	55	90	457	500	18	467
NSGW150/26-22KW/4	180L-4	22	180	695	4	725	340	600	1439	85	870	1200	55	90	457	500	18	404
NSGW150/26-18.5KW/4	180M-4	18.5	180	695	4	690	340	600	1404	85	870	1200	55	90	457	500	18	383
NSGW150/26-15KW/4	160L-4	15	180	695	4	660	340	580	1374	85	880	1200	55	90	457	500	18	346
NSGW150/32-90KW/4	280M-4	90	180	775	6	1030	375	755	1746	100	1070	1450	60	95	557	600	18	864
NSGW150/32-75KW/4	280S-4	75	180	775	6	980	375	755	1696	100	1070	1450	60	95	557	600	18	822
NSGW150/32-55KW/4	250M-4	55	180	770	4	910	370	735	1624	110	1010	1450	60	90	557	600	18	648
NSGW150/32-45KW/4	225M-4	45	180	770	4	835	370	695	1549	110	950	1450	60	90	557	600	18	575
NSGW150/32-37KW/4	225S-4	37	180	770	4	810	370	700	1524	110	950	1450	60	90	557	600	18	564
NSGW150/32-30KW/4	200L-4	30	180	770	4	765	370	670	1479	110	900	1300	60	90	557	600	18	479
NSGW150/32-22KW/4	180L-4	22	180	770	4	725	370	630	1439	110	900	1300	60	90	557	600	18	418
NSGW150/40-132KW/4	315M-4	132	180	880	6	1320	430	945	2036	110	1150	1650	55	115	657	700	18	1323
NSGW150/40-110KW/4	315S-4	110	180	880	6	1275	430	940	1991	110	1150	1650	55	115	657	700	18	1180
NSGW150/40-90KW/4	280M-4	90	180	880	6	1030	430	810	1746	110	1080	1500	55	115	657	700	18	921
NSGW150/40-75KW/4	280S-4	75	180	880	6	980	430	810	1696	110	1080	1500	55	115	657	700	18	878
NSGW150/40-55KW/4	250M-4	55	180	875	4	910	425	790	1624	110	990	1400	55	110	557	600	18	696
NSGW150/40-45KW/4	225M-4	45	180	875	4	835	425	750	1549	110	990	1400	55	110	557	600	18	625
NSGW150/40-37KW/4	225S-4	37	180	875	4	810	425	755	1524	110	990	1400	55	110	557	600	18	619
NSGW150/50-200KW/4	315L2-4	200	180	990	6	1320	490	1005	2176	110	1350	1850	75	115	657	700	18	1579
NSGW150/50-160KW/4	315L1-4	160	180	990	6	1320	490	1005	2176	110	1350	1850	75	115	657	700	18	1497
NSGW150/50-132KW/4	315M-4	132	180	990	6	1320	490	1005	2176	110	1300	1750	75	115	657	700	18	1452
NSGW150/50-110KW/4	315S-4	110	180	990	6	1275	490	1000	2131	110	1300	1750	75	115	657	700	18	1309
NSGW150/50-90KW/4	280M-4	90	180	990	6	1030	490	870	1886	110	1200	1650	75	115	657	700	18	1056
NSGW200/26-55KW/4	250M-4	55	180	875	4	910	425	790	1649	110	990	1400	75	110	557	600	18	708
NSGW200/26-45KW/4	225M-4	45	180	875	4	835	425	750	1574	110	990	1400	75	110	557	600	18	635
NSGW200/26-37KW/4	225S-4	37	180	875	4	810	425	755	1549	110	990	1400	75	110	557	600	18	624
NSGW200/26-30KW/4	200L-4	30	180	875	4	765	425	725	1504	110	940	1300	75	110	557	600	18	539
NSGW200/26-22KW/4	180L-4	22	180	875	4	725	425	685	1464	110	940	1300	75	110	557	600	18	478
NSGW200/26-18.5KW/4	180M-4	18.5	180	875	4	690	425	685	1429	110	940	1300	75	110	557	600	18	457
NSGW200/32-110KW/4	315S-4	110	180	910	6	1275	430	940	2131	110	1300	1750	50	115	657	700	18	1263

Model	Motor(B3)		Installation dimension of water pump(mm)															Total weight of the unit kg
	Base No	Power (kW)	a	H	c	L4	H1	H2	L	L1	L2	L3	s	w	B1	B	φd	
NSGW200/32-90KW/4	280M-4	90	180	910	6	1030	430	810	1886	130	1210	1650	50	115	657	700	18	1005
NSGW200/32-75KW/4	280S-4	75	180	910	6	980	430	810	1836	130	1210	1650	50	115	657	700	18	962
NSGW200/32-55KW/4	250M-4	55	180	905	4	910	425	790	1764	130	1170	1600	50	110	607	650	18	784
NSGW200/32-45KW/4	225M-4	45	180	905	4	835	425	750	1689	130	1070	1500	50	110	607	650	18	709
NSGW200/32-37KW/4	225S-4	37	180	905	4	810	425	755	1664	130	1070	1500	50	110	607	650	18	698
NSGW200/32-30KW/4	200L-4	30	180	905	4	765	425	725	1619	130	1070	1500	50	110	607	650	18	614
NSGW200/40-200KW/4	315L2-4	200	180	930	6	1320	450	965	2176	130	1330	1850	50	115	657	700	18	1576
NSGW200/40-160KW/4	315L1-4	160	180	930	6	1320	450	965	2176	130	1330	1850	50	115	657	700	18	1494
NSGW200/40-132KW/4	315M-4	132	180	930	6	1320	450	965	2176	110	1300	1750	35	115	657	700	18	1449
NSGW200/40-110KW/4	315S-4	110	180	930	6	1275	450	960	2131	110	1300	1750	35	115	657	700	18	1306
NSGW200/40-90KW/4	280M-4	90	180	930	6	1030	450	830	1886	130	1210	1650	35	115	657	700	18	1047
NSGW200/40-75KW/4	280S-4	75	180	930	6	980	450	830	1836	130	1210	1650	35	115	657	700	18	1004
NSGW200/40-55KW/4	250M-4	55	180	925	4	910	445	810	1764	130	1170	1600	50	110	607	650	18	827
NSGW200/50-315KW/4	355L-4	315	200	1140	6	1540	580	1235	2466	110	1510	2100	95	155	800	850	18	2457
NSGW200/50-250KW/4	355M-4	250	200	1140	6	1540	580	1235	2466	110	1510	2000	95	155	800	850	18	2303
NSGW200/50-200KW/4	315L2-4	200	200	1100	6	1320	540	1055	2246	110	1420	1850	95	115	807	850	18	1710
NSGW200/50-160KW/4	315L1-4	160	200	1100	6	1320	540	1055	2246	110	1420	1850	95	115	807	850	18	1628
NSGW200/50-132KW/4	315M-4	132	200	1100	6	1320	540	1055	2246	110	1370	1750	95	115	807	850	18	1585
NSGW200/50-110KW/4	315S-4	110	200	1100	6	1275	540	1050	2201	110	1370	1750	95	115	807	850	18	1442
NSGW250/32-160KW/4	315L1-4	160	220	990	6	1320	470	985	2237	110	1300	1850	90	115	657	700	18	1535
NSGW250/32-132KW/4	315M-4	132	220	990	6	1320	470	985	2237	110	1300	1850	90	115	657	700	18	1491
NSGW250/32-110KW/4	315S-4	110	220	990	6	1275	470	980	2192	110	1300	1850	90	115	657	700	18	1348
NSGW250/32-90KW/4	280M-4	90	220	990	6	1030	470	850	1947	130	1250	1650	90	115	657	700	18	1089
NSGW250/32-75KW/4	280S-4	75	220	990	6	980	470	850	1897	130	1250	1650	90	115	657	700	18	1046
NSGW250/32-55KW/4	250M-4	55	220	985	6	910	465	830	1827	130	1200	1650	90	110	657	700	1	